

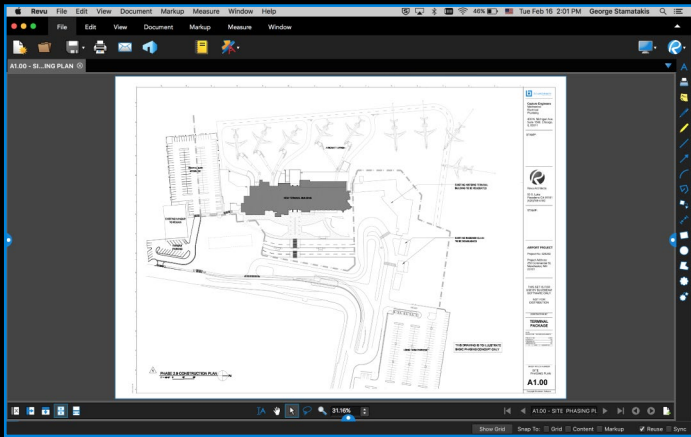
Bluebeam Revu Mac

Feature Overview



Table of Contents

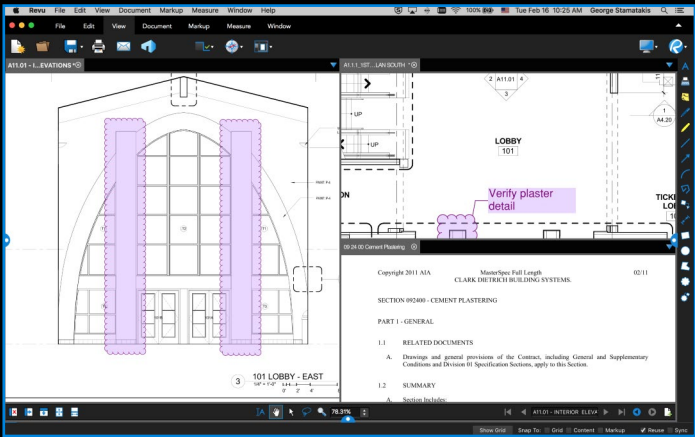
Getting Started	3
MultiView™ and Split Documents	4
Markup Tools	5
Tool Chest™	6
Markups List	7
Bluebeam Studio™	8
Overlay Pages	9
Measurement Tools	10
Tips and Tricks	11



Getting Started

Revu's intuitive interface makes it easy to find exactly what you want. Click on the menu at the top of the interface to display groups of related buttons on the Command bar.

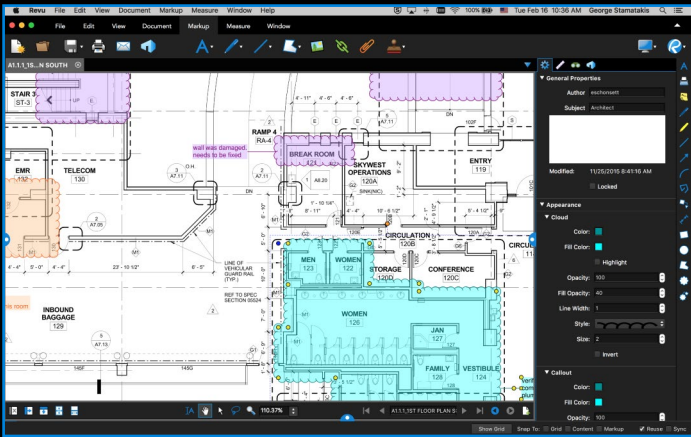
At the left, right and bottom are panels that can be opened and closed to expose tabs such as File Access™, Bookmarks, Thumbnails, Tool Chest™, Properties, Search, Bluebeam Studio™, Markups List, Measurements and Layers. Use MultiView™ technology to split your screen up to 16 times and sync tabs to pan and zoom in unison. Or, drag a file or feature tab to another monitor to maximize your viewing space. How easy is that?



MultiView and Split Documents

An innovative way to see your work — 16 times over. Why limit yourself to one tabbed view, or two, or even 15? Split your screen up to 16 times and sync them all to pan and zoom in unison using Revu's exclusive MultiView™ technology. View and compare the same document in different areas or different documents in the same area.

Working with more than one monitor? Drag a document or feature tab to another monitor to maximize viewing space or to keep your tools out of the picture — it's your choice.

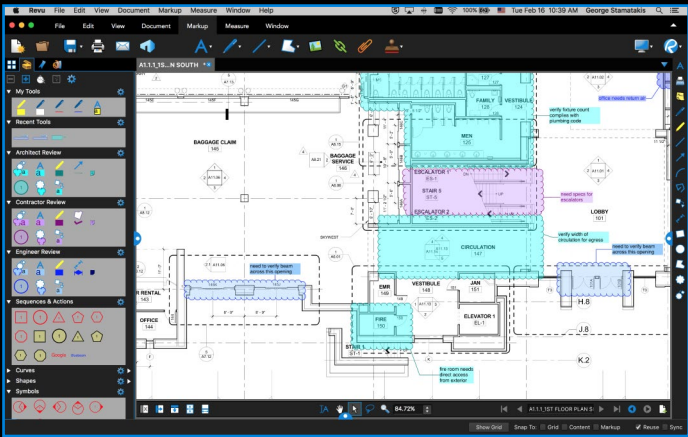


Markup Tools

Adding markups has **never been easier**. Point, click and release – that’s all it takes. Select from markup tools such as text, notes, lines, clouds, stamps, images and more. Change the color, fill, opacity, line type or font to suit your mood. Place images from your media library as markups and provide team members with the details they need to get the job done. Give your documents the stamp of approval by importing and applying custom stamps to your drawings.

Display a layout grid over your PDF and toggle snap-to behavior on and off for precise markup placement. Or enable layers to better organize the content in a PDF; just toggle layers on or off to control the visibility of all content and markups on that layer.

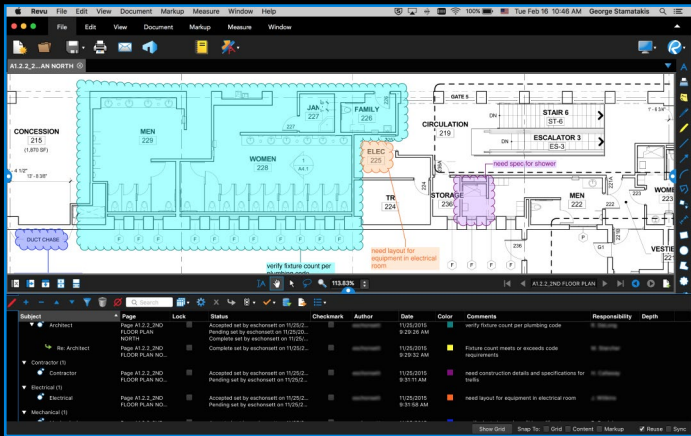
Finally, flatten all or individual markups to make them a permanent part of the PDF. Simple enough? We think so.



Tool Chest

Stop creating the same annotation over and over again. Revu's patented Tool Chest™ keeps track of your markups as you create them, and lets you save them for easy reuse. After you add and customize a markup, drag it from Recent Tools and drop it into any tool set for future sessions. Separate your markups into different tool sets to help categorize and share them with project partners, keeping everyone's annotations consistent.

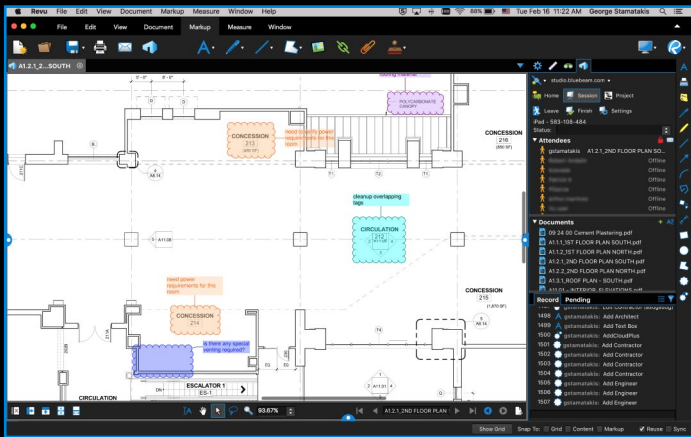
Double-click on one of your saved markups to toggle from "Drawing Mode" to "Properties Mode" and create brand-new markups using that same style. How easy is that?



Markups List

For once, being tracked is a good thing. Want to know who said what, when? Pull up the Markups list to see an annotation's author, date, time, status and more. Sort and filter data, or use Search to find the exact markup information you need. Import and export markups with ease as you append another reviewer's comments to yours for a composite overview.

When all is said and done, generate a comprehensive markup report from your PDF that displays all the information in your Markups list. Export as a CSV file or PDF Summary, which can be appended and hyperlinked to the original PDF. What can't the Markups list do?

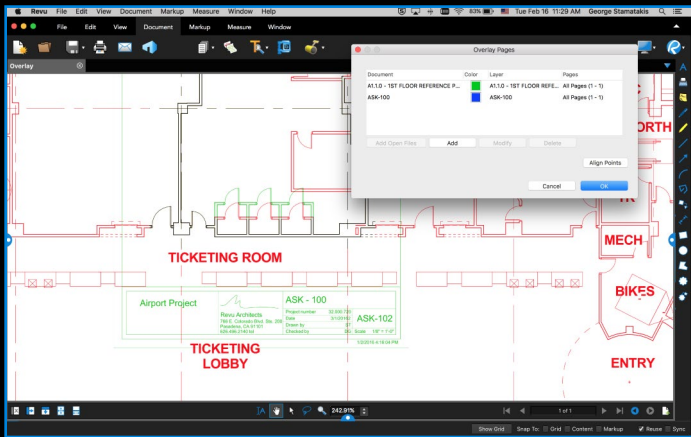


Bluebeam Studio

Make Revu your Studio. Bluebeam Studio is the ultimate document-based digital collaboration solution, allowing you to manage projects digitally from start to finish anywhere, at any time, from your desktop, Windows tablet or iPad.

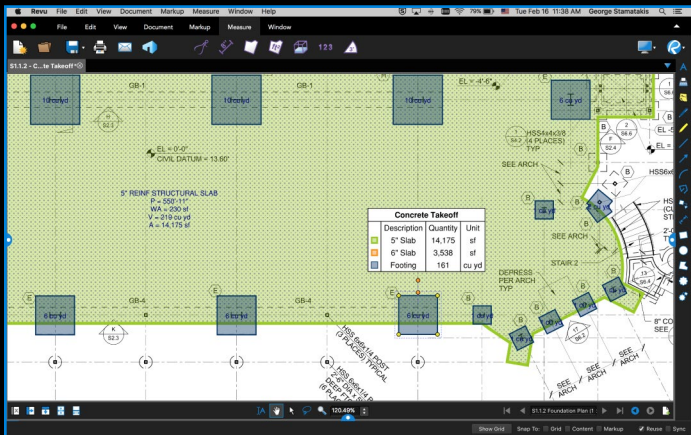
There are two sides to Studio: Projects and Sessions. Store, manage and invite project partners to check out and edit an unlimited number of PDFs and any other file type in the cloud (for free!) or on your local server using **Studio Projects**. Collaborate on the fly by uploading PDFs into online **Studio Sessions**, where you and your selected attendees can comment on the same PDFs together in real time or separately on your own. Project PDFs can be uploaded into a Session, allowing you to check in markups and edits as you make them in real time.

Even if your colleagues don't have Revu, they can simply download Bluebeam's free PDF viewer, Bluebeam Vu for Windows and iPad, to join Studio and participate in the live collaboration Sessions. You also have the flexibility to send password-protected links to a Project file to anyone, whether or not they have a Studio account. There are no limits to what you can do when leveraging the combined power of Revu and Studio.



Overlay Pages

Comparing drawings will never be the same again. Now your eyes can focus on more important things as Revu does the work for you. Use Overlay Pages to compare drawings using layers—just apply different colors to two or more different PDFs. Then select three points to accurately align your documents. The content from each page will display as a different color to highlight the differences. In areas where there is no change, the colors will blend together to form a new, darker color. Let us do the hard work for you.



Measurement Tools

Never use a ruler again. Revu has all the tools you need to count and measure length, area, volume, perimeter and radius right from your PDFs. One measurement is all you need for Revu to automatically calculate all other related measurements, including Wall Area, and display them in the Markups list. To begin, simply click Calibrate and pick two known measurements to set the scale.

But wait, there's more. All of your measurements are tracked in the Markups list, where you can easily export the sort totals to a CSV or PDF Summary. With Revu's SmartGroup™ technology, you can automatically calculate subtotals in the Markups list by simply grouping measurements. Not only that, but you can also quickly view and make changes to individual annotations within a group. Who has time to open up another program?

Tips and Tricks



Cloud+ combines the convenience of clouds and the clarity of callouts into a single markup tool, including the ability to customize the appearance properties for both components independently.



Combine, reorder, insert, delete, copy, extract, number and rotate pages from the **Thumbnails panel**. Reorder pages within the panel by using a simple drag and drop. Copy pages and paste them to a new location, or access other page assembly options by right-clicking on the thumbnail view.



Attach a file into a PDF itself so that it has a visible icon on the document, creating a complete package of documents.



Zoom versus scroll: In **One Full Page** mode, the mouse wheel defaults to zoom in/out. But if you select **Scrolling Pages** mode, the center mouse wheel defaults to page scroll. You can set either of these as your default preference.



Click on the **Snapshot** tool to copy an area of a PDF. The content is saved to your clipboard, maintaining the vector data and image quality of the original. Paste the snapshot in another area of the PDF or another PDF.



Select multiple markups by using the **Lasso** tool or left-click, hold and drag while in Selection mode.



Grid shows the grid on the workspace. **Snap** will snap markup end points to the grid. **Content** will snap to the underlying content (vector). **Markup** snaps to other markups in the PDF. **Reuse** will eliminate the need to select the same tool over and over again. **Sync** will synchronize all split views so that you can pan and zoom multiple views of the same file at the same time.



Add curves to polylines and polygons by right-clicking on a line or control point and selecting Convert to Arc. Add and subtract control points, too.



Right-click on a callout and select **Add Leader** to create one callout annotation with multiple leader lines.



Option Key mode lets you view each individual element in a grouped markup. All you have to do is press Alt.



Rotate markups and captions by grabbing the orange control point at the top of a markup. Hold the Shift key to rotate to an exact point.



Import premade tool sets from our frequently updated **Tool Sets Extensions** page.



bluebeam®
A NEMETSCHEK COMPANY

No Limits®