



bluebeam®
NO LIMITS®

**A Guide to Implementing Bluebeam Within Your
Enterprise**

(Revised for Revu 2015.5)

Table of Contents

Introduction	4
Section 1 – Net Deployment	
Net Deployment Methods	6
Prerequisites	7
Deployment Recommendations	9
Authorization	10
Upgrading Bluebeam	11
MSI Deploy Installation	12
Section 2 – The Bluebeam Administrator	
The Bluebeam Administrator	1
The Bluebeam Administrator Tabs	17
Section 3 – Managed Configurations	
Centralizing Net Configurations	22
Managing Net Configurations	23
Net Config in Deployment	26
Section 4 – Revu Settings	
Introduction to Revu	28
User Preferences	30
Revu Preferences	31
Deploying Preferences	32
Best Practices for Deploying Settings	34
Profiles	35
Read-Only Profiles	36
Sharing Profiles on a Network	37
Tool Chest	40
Managing Tool Sets	41
Locking Tool Sets	43

Read-Only Tool Sets	44
Hatch Patterns	45
Managing Hatch Pattern Sets	46
SharePoint & ProjectWise Integration	47
Post-Installation Customization	50
Revu Command Line Parameters	52

Section 5 – Appendices

Appendix A – MSI Deployment Parameters	55
Appendix B – Command Line Examples	58
Appendix C – Deployment Walkthrough	61
Appendix D – Disabling Features	71
Appendix E – Troubleshooting	72
Appendix F – Bluebeam Administrator Command Line Options	74



A Guide to Implementing Bluebeam Within Your Enterprise is intended to describe how Bluebeam technology may best be utilized in an enterprise setting. Typically, large organizations face unique challenges when implementing desktop applications. These challenges range from finding the most efficient method of deploying an application to end user workstations, to configuring an application for use in multi-user settings within the network environment.

From the outset, Bluebeam Software has been designed to support large scale use within an organization. This document provides guidelines for planning, deploying, and maintaining Bluebeam within your organization.

Sections

1. **Deployment** – Describing the automated, unattended deployment of Bluebeam Software using the MSI deployment package.
2. **The Bluebeam Administrator** – Providing an overview of the application that allows users to manage their Bluebeam Software.
3. **Managed Configurations** – Defining locations for properties that may be centralized on a network.
4. **Revu Settings** – Introducing Profiles, Preferences, and tool sets, along with a tutorial on applying them to your organization.
5. **Appendices** – Provides technical parameters, configuration examples, and a full deployment walkthrough.



Net Deployment

Section 1

Net Deployment Methods



Section 1.01

All Bluebeam net deployment resources including software downloads can be found on our website at: <http://www.bluebeam.com/us/support/enterprise-configuration.asp>

System administrators should deploy Bluebeam Software using the provided MSI Deployment Package, which allows for an unattended installation across their network. The MSI Deployment Package must be deployed with elevated privileges.

MSI Deployment Package (MSI Deploy)

The MSI Deploy package uses Microsoft's Windows Installer framework to execute installation using the Msiexec Utility. Parameters can be passed through command line or can be configured through an MSI editor such as Orca or InstEd and run with a network deployment vehicle such as Group Policy or SCCM.



Installation procedures outlined in the following pages are guidelines that allow an administrator to apply this information as a supplement to normal deployment procedures.

In order to use this document, it is assumed that you are familiar with Windows command line arguments. Administrators should also have the necessary infrastructure and resources already in place to execute log-on scripts and deploy MSI packages. It is recommended that you run your deployment in a test environment and verify success before fully deploying any software over your network.

Prerequisites



Section 1.02

Before installing Revu, please consider these requirements to ensure a successful deployment of the program. Listed below are the necessary prerequisites for Bluebeam Revu 2015.5 and above.

- Windows Installer 4.5 or greater.
- Microsoft .NET Framework 4.5.0 or greater.
- The system on which Revu is being installed has no pending reboots.

Note: The Revu 2015.5 MSI installer automatically checks for pending reboots to ensure that the Microsoft .NET Framework setup is complete as Revu will fail to install if it is not. In environments where Windows Updates are centrally managed by the IT department, it's possible for the pending reboot flag to not be cleared properly after a restart. In these cases, Revu will fail to install even though all the prerequisites have been met. There is an optional property (IGNORE_RBT) in the MSI that can be enabled to bypass this check. Before enabling this property, however, ensure that .NET Framework 4.5.0 or higher is installed and that the computer has been restarted. For more information on the MSI properties See "Appendix A" on page 55.

- All previous versions of Bluebeam Software must be removed before installation.

Note: The MSI automatically uninstalls all previous installations of Revu 2015 and any MSI deployments of Revu 12.5 or higher; installations of Revu 12.1 or older, or installations of 12.5/12.6 made via the stand-alone .exe or InstallShield Silent Setup deployment package, should deploy the uninstall script included with the MSI manually.

An Internet connection is required to complete the automated authorization process of Bluebeam Software. See "Section 1.04 – Authorization" on page 10 for details.

Prerequisites for older releases can be found on our website at <http://www.bluebeam.com/us/support/articles/install/in-dotnet.asp>

Compatibility Requirements

Supported Operating Systems

- Windows 7 Service Pack 1 (32-bit and 64-bit)
- Windows 8 and 8.1 (32-bit and 64-bit)

Recommended Minimum Hardware

- Display: 1024 x 768 high color, 32-bit
- RAM: 2+ GB
- Hard Disk: Up to 1.2GB of available space may be required

- Processor: 1GHz Pentium processor or equivalent

When using Revu for general office applications, a general class computer may be used. At least 2GB of RAM is recommended.

Note: Revu and Vu cannot be installed on the same machine. To deploy both applications, please use separate machines.

Revu for Larger Sets of Engineering Documents

In drawing sets where PDF files may contain many hundreds of large format drawings, adequate memory and processor resources are crucial for optimal performance. A recommended hardware configuration would be an Intel i5 Dual Core 3.2GHz or Quad Core 2.3 GHz or better processor and at least 8 GB RAM.

Please check the Bluebeam website at <http://www.bluebeam.com/us/support/compatibility.asp#hardware> for the latest compatibility notifications.



Windows Installers

Best practices for deploying Microsoft's Windows Installer can be found at:

[http://msdn.microsoft.com/en-us/library/bb204770\(VS.85\).aspx](http://msdn.microsoft.com/en-us/library/bb204770(VS.85).aspx)

Microsoft .NET Framework 4.5.0 or Greater

Before installing Revu 2015.5, the Microsoft .NET Framework 4.5.0 or greater MUST be installed and the computer must be restarted so as to complete the .NET Framework setup. Failure to restart after installing the .NET Framework will prevent Revu from installing.

Staggered Deployment

Administrators required to deploy the .NET application separately may find that staggering the .NET Framework deployment days prior to deploying Bluebeam is an efficient alternative to deploying all applications at once. Staggering deployment over multiple days allows for validation against unforeseen deployment issues that arise.

Best Practices for Deploying Bluebeam Software

1. Determine the prerequisites that are required for your network.
Enabling Delayed Authorization when using SCCM is recommended.
2. Close all other applications when installing Revu.
3. Deploy necessary prerequisites and restart.
4. Validate installation of components.
5. Confirm Internet access for authorization or enable delayed authorization.
6. Configure parameters for your chosen deployment method.
7. Test and confirm deployment to a sample group.
8. Execute deployment of Bluebeam Software.
9. Restart the computer to ensure all custom settings take effect.
10. Validate installation of Bluebeam Software.

Authorization



Section 1.04

Bluebeam Software uses a node-locked licensing system. This allows a single instance of an application to run on a specific machine. During installation, Bluebeam will attempt to complete authorization. The application *PbMgr5.exe* attempts to access the Bluebeam license server during this process. In order to succeed, systems must have a valid Internet connection.

Uninstallation will also access the server and release a license in the same manner.

Ensure successful authorization by opening your firewall or proxy server to allow access to Bluebeam's license server. This address is configured as Port 443 for https.

License Servers:

- <https://activation.bluebeam.com>
- <https://bluebeam-us-east.accesscontrol.windows.net/>

Delayed Authorization

Delayed Authorization (DA) is a deployment parameter that programs the authorization query to initiate after deployment is complete. Authorization will be delayed until the user logs onto their computer and a save operation is performed through Bluebeam Software. This includes any attempt to save in Revu or the Bluebeam PDF printer, as well as saving from any Bluebeam plugin (AutoCAD, Solidworks, or MS Office).

Note: It is highly recommended in situations where the administrator account does not have Internet access, such as when deploying with software such as SCCM, delayed authorization can be used if users are granted basic Internet access. See "Appendix A" on page 55 for more information about enabling Delayed Authorization in the MSI.

Install as Trial

Bluebeam Revu can be installed as a 30-day trial. Enter the word TRIAL in the BB_SERIALNUMBER field of the MSI property table, or as BB_SERIALNUMBER=TRIAL in a command line script. TRIAL must be entered in upper case. Do not modify the Product Key field when installing as a trial.

License Gateway

A license gateway is available on our website allowing systems managers a view of their current registration information at any time.

License Gateway – <https://portal.bluebeam.com>



Major Upgrades vs. Minor Updates

Two types of upgrades are provided by Bluebeam: major upgrades, and minor updates. Major upgrades consist of full version releases. Users with previous versions of Bluebeam (Revu 12 and below) upgrading to Revu 2015 are performing a major upgrade. Minor updates include those that occur between full releases such as 2015.1.1 – 2015.5, and other similar releases.

In the circumstances of either update, all prerequisites (See "[Section 1.02 – Prerequisites](#)" on [page 7](#)) remain the same, including uninstalling previous installations of Revu. Major and minor updates are all full installations. As such, minor updates such as Revu 2015.5, can be run on a system without a previous version of Bluebeam Revu installed.

MSI Deploy

The 2015.1 MSI automatically uninstalls MSI deployments of Revu 12.5 or higher; installations of Revu 12.1 or older, or installations of 12.5/12.6 made via the stand-alone .exe or InstallShield Silent Setup deployment package, should deploy the uninstall script included with the MSI manually. If you are upgrading, we included a text script named *Uninstall Previous Versions.txt* that will assist you in uninstalling any previous version of Bluebeam you may have. This can be run as part of a Group Policy Object prior to your MSI deployment, as a step in an SCCM task sequence, or simply part of a log-on script.

1. The Bluebeam MSI Deploy will **not** access Microsoft to obtain .NET Framework prerequisites. Verify installation of the Microsoft .NET Framework 4.5.0 or greater on each system prior to deployment. The system must be restarted after installing Microsoft .NET Framework or Revu will fail to install.
2. Remove previous versions of Bluebeam Software from each workstation before deploying any update.

The 2015.1 and higher MSI will automatically search for and remove all previous installations of 2015 and any previous MSI deployments of version 12.5 and higher. For versions 12.1 or lower, or installations of 12.5/12.6 made via the stand-alone .exe or InstallShield Silent Setup deployment package, the uninstall script must be manually deployed. For example:

- Upgrading from version 2015 (MSI deployment or stand-alone .exe installation) to 2015.1 or higher = Do not deploy uninstall script, old version uninstalled automatically.
- Upgrading from version 11.6 to 2015.x = Deploy uninstall script.
- Upgrading from version 12.1 to 2015.x = Deploy uninstall script.
- Upgrading from version 12.5 MSI deployment to 2015.x = Do not deploy uninstall script, old version uninstalled automatically.
- Upgrading from version 12.6 InstallShield Silent Setup deployment to 2015.x = Deploy uninstall script.

MSI Deploy Installation



Section 1.06

MSI Deploy was designed and tested with the intention that administrators run the package as a separate entity. While the MSI Deploy package may be run in conjunction with other packages, users intending to build their own MSI for Bluebeam deployment are not supported.

To edit the MSI file prior to deployment, install Orca (or another similar MSI database editing program, such as InstEd) then refer to instructions below to edit the MSI database for your organization.

Note: Editing an MSI invalidates Bluebeam's digital signature on the file, which might be problematic in some environments. To avoid this, pass any MSI Properties as part of a command line script or apply an MST Transform file. See "Appendix B" on page 58 for details.

Upgrades

The Revu 2015.1 and higher MSI will automatically uninstall all previous installations of 2015 and any MSI deployments of Revu version 12.5 and higher. Deploy the *Uninstall Previous Versions.txt* script (rename to .bat) to remove versions of Revu 12.1 or older, or installations of 12.5/12.6 made via the stand-alone .exe or InstallShield Silent Setup deployment package.

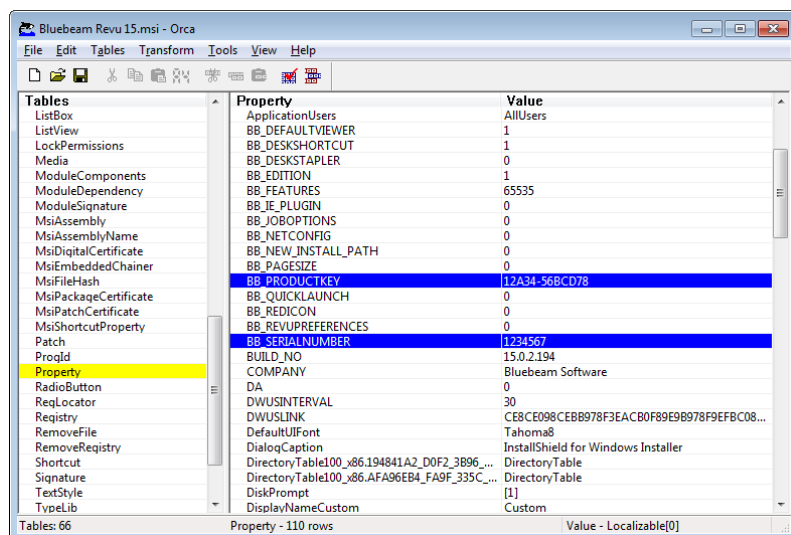
Note that this will not remove any custom configurations of your program.

All configuration strings are located under the **Property** table. Click on the Property header to sort alphabetically. Critical parameters begin with "BB_".

To automate the registration process, input your serial number and product key into the fields listed below.

BB_SERIALNUMBER: your 7–digit serial number

BB_PRODUCTKEY: your 12–character product key (must be entered in ALL CAPS)



Property	Value
ApplicationUsers	AllUsers
BB_DEFAULTVIEWER	1
BB_DESKSHORTCUT	1
BB_DESKSTAPLER	0
BB_EDITION	1
BB_FEATURES	65535
BB_IE_PLUGIN	0
BB_JOBOPTIONS	0
BB_NETCONFIG	0
BB_NEW_INSTALL_PATH	0
BB_PAGESIZE	0
BB_PRODUCTKEY	12A34-56BCD78
BB_QUICKLAUNCH	0
BB_REDICON	0
BB_REVUPREFERENCES	0
BB_SERIALNUMBER	1234567
BUILD_NO	15.0.2.194
COMPANY	Bluebeam Software
DA	0
DWUSINTERVAL	30
DWUSLINK	CE8CE098CEBB978F3EAC80F89E9B978F9EFBC08...
DefaultUIFont	Tahoma8
DialogCaption	InstallShield for Windows Installer
Shortcut	DirectoryTable
Signature	DirectoryTable
TextSty	[1]
TypeLib	Custom

See [MST Transforms File Creation](#) below for MST creation process using Orca and InstEd MSI Editors.

Once all necessary changes are made, save the file. Your MSI is now reconfigured and ready to be deployed. MSI deploy must be run with elevated privileges. A list of configurable parameters is located in ["Appendix A" on page 55](#) as well as in the MSI Deploy *Readme* file. Use Group Policy, SCCM or another preferred application to execute your deployment of Bluebeam Revu.

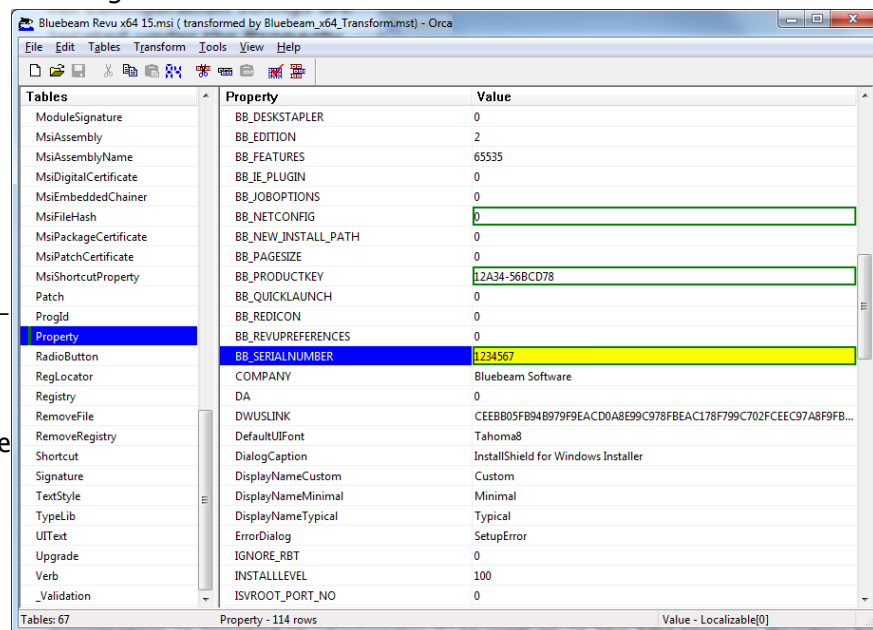
Warning: Do not edit any parameters in the MSI other than those listed in ["Appendix A" on page 55](#).

Note: When saving changes to the MSI, **Save** the existing file. Do not use **Save As**. Close the MSI Editor before testing the deployment, otherwise the installer will be marked as "in use" and will not run.

MST Transforms File Creation

Create MST Transforms file using InstEd:

1. Open MSI for editing.
2. Go to **Transforms** > **New Transforms**.
3. Give file a name with an .mst extension.
4. Edit the Properties table in the MST file as desired.
5. Go to **File** > **Save** to save the MST file.



Create MST Transforms file using Orca:

1. Open MSI for editing.
2. Go to **Transform** > **New Transform**.
3. Edit the Properties table in the MSI file as desired.
4. Go to **Transform** > **Generate Transform**.
5. Save the file with an .mst extension.

Edit the MST file like you would the MSI file, then apply the MST Transforms file to your command line options. See ["Appendix B" on page 58](#) for details.



The Bluebeam Administrator

Section 2



The Bluebeam Administrator allows you to configure the parameters of your Bluebeam software suite. This includes enabling/disabling plugins, configuring the Bluebeam PDF printer, changing default settings, and enabling debugging logs.

Sections of the Bluebeam Administrator are separated into tabs. The only tabs that pertain to deployment are:

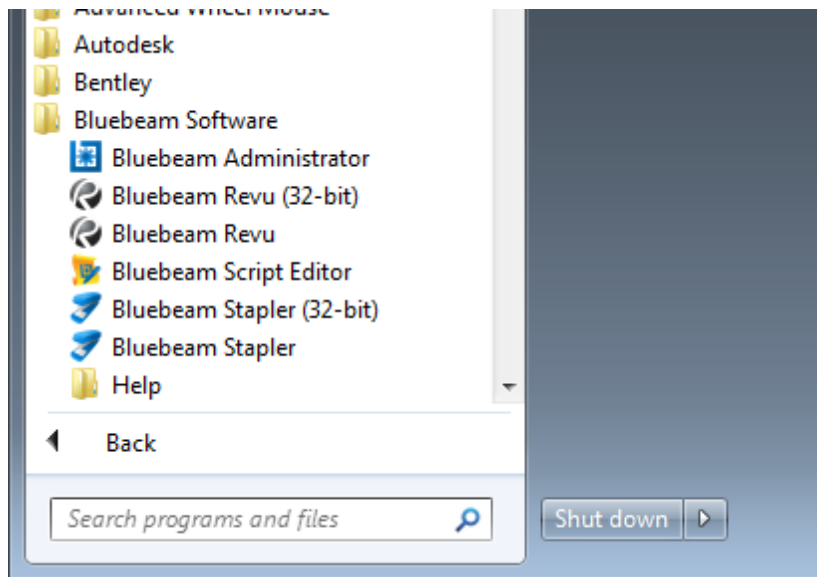
- **NetConfig** tab: Used to setup a Net Configuration to be shared across your organization.
- **Printer** tab: Used to create any custom page sizes to share.
- **AutoCAD Page Sizes** tab: Used to enable page sizes that should be available to users.

Note: Any custom printer pages created or AutoCAD pages selected will be managed by the Net Configuration once those pages are created or enabled/disabled in their respective tabs. See "[Section 3.01 – Centralizing Net Configurations](#)" on page 22.

The rest of the (tabs) information here is just for informational purposes. These tabs allow the following functions:

- Control the loading and unloading of plugins integrated into AutoCAD, Revit, Navisworks, SketchUp Pro, SolidWorks, and MS Office.
- Configure centralized network settings for the plugins.
- Control the PDF printer: setting up, adding page sizes and reinstalling the Bluebeam PDF printer.
- Display log files.
- Enable Revu as the default PDF viewer.
- Backup, restore and reset the settings for Revu.
- Enable the PDF viewer plugin for Internet Explorer.
- Manage page sizes of the AutoCAD Plugin (CAD and eXtreme Editions only.)

You can access the Bluebeam Administrator from within Revu by going to **Help > Administrator** or from the Windows **Start > All Programs > Bluebeam Software** menu.



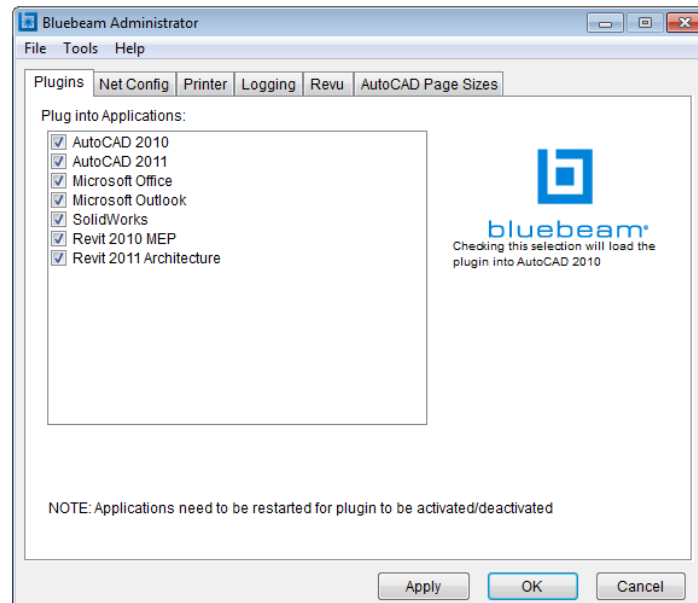
Several options in the Bluebeam Administrator can be modified post-install via the command line. See ["Appendix F" on page 74](#).



Plugins Tab

The Plugins tab shows all applications installed on your system that are supported by Bluebeam plugin technology.

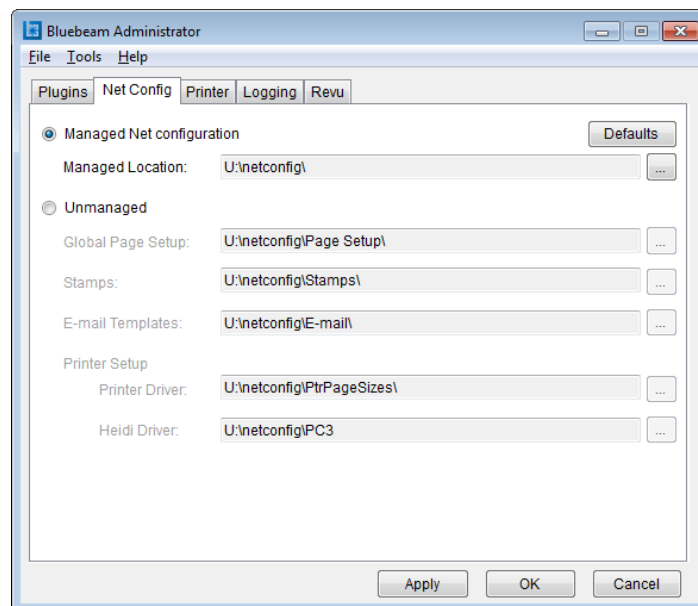
On a system with multiple versions of the same software, the Plugins tab will show all supported versions of that application running on the workstation.



Net Config Tab

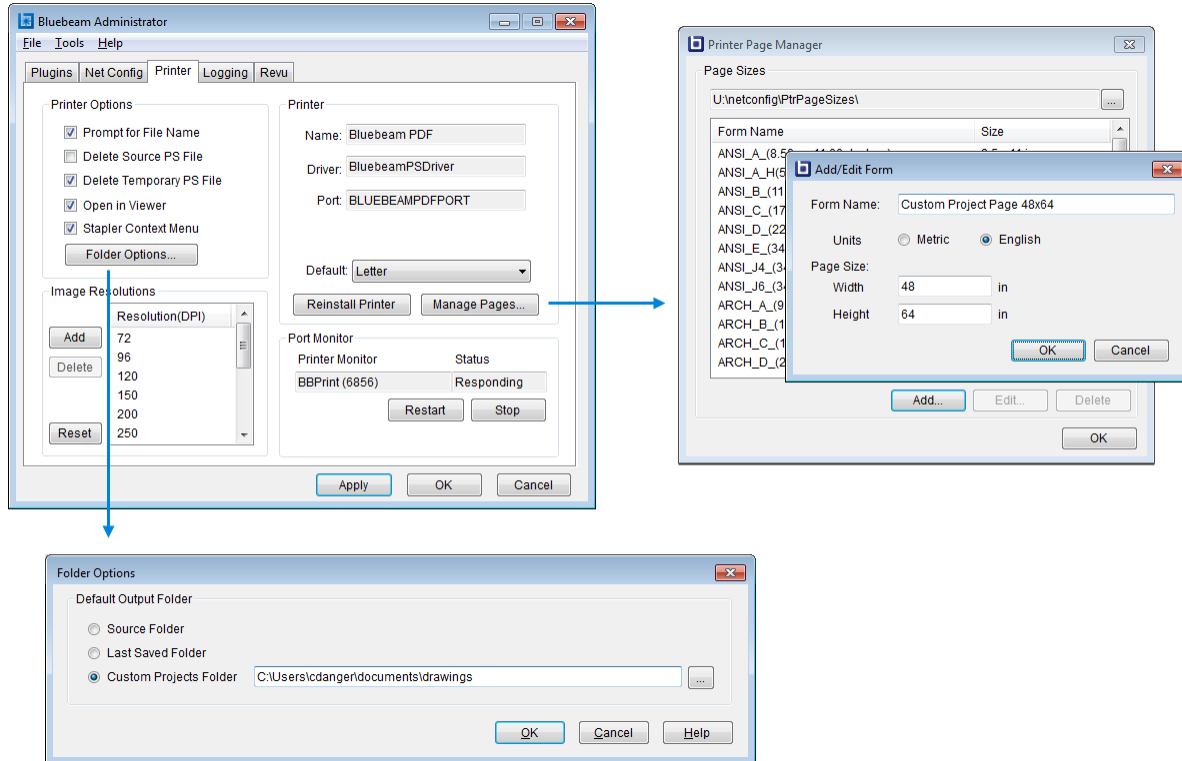
The Net Config tab manages the controls for PDF creation through Bluebeam plugins and the Bluebeam PDF printer. These settings apply to elements such as stamps, printer page sizes, and global page setups for all Bluebeam plugins.

Net Config can be managed from a central location or left as default and managed by the user. See ["Section 3.01 – Centralizing Net Configurations"](#) on page 22



Printer Tab

The Printer tab controls aspects of the Bluebeam PDF printer driver. Through this tab, you can control folder options, add/edit printer page sizes, and uninstall/reinstall the printer driver.



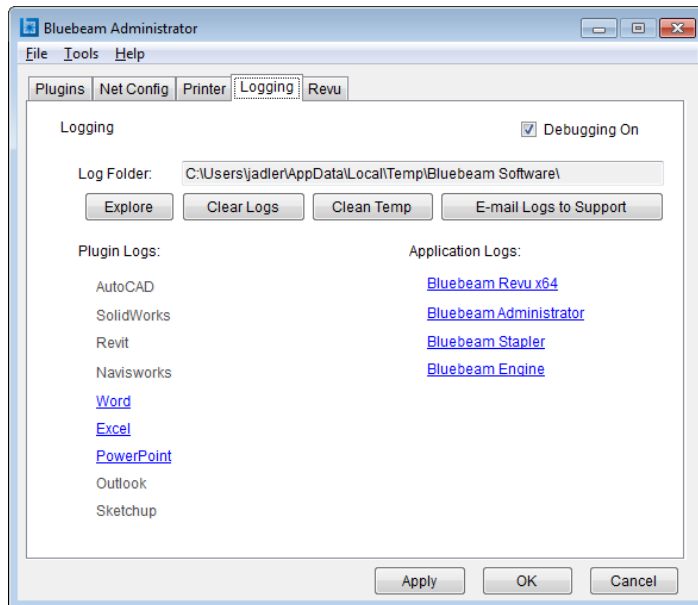
Folder Options

Folder Options allows you to configure the default save path for PDF conversions done with the Bluebeam PDF printer.

Source folder sets the default save path to the same folder as the source file.

Last Saved Folder will set the default save path to the last folder that was used.

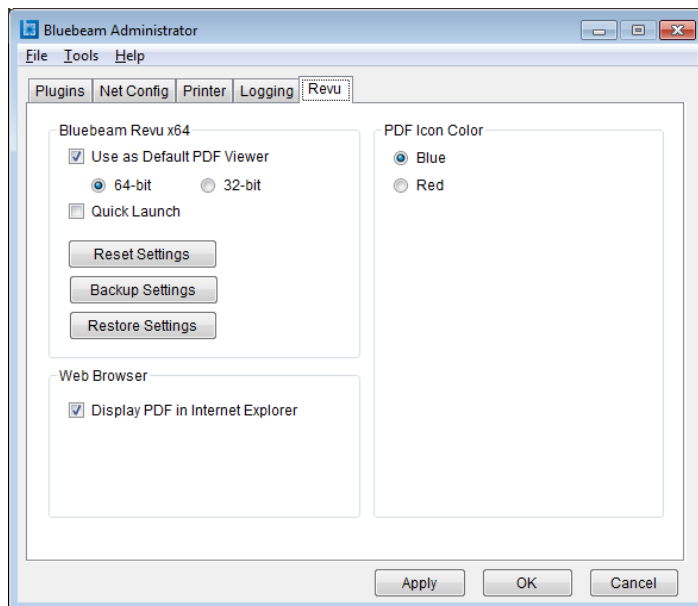
Custom Projects Folder allows you to assign the default save path to a location that you specify.



Logging Tab

The Logging tab manages debugging information that can be used to troubleshoot errors and problems within your software.

Check the box marked **Debugging On** to enable detailed logging.



Revu Tab

The Revu tab controls the default viewer option and icon color selection. Also on this tab is the Reset Settings button which allows a user to switch all settings back to default. See ["Section 4 – Revu Settings" on page 27](#) for more information on these settings.

Revu x64 has an extra option that allows users to default to the 32-bit viewer easily. There is also a **Backup Settings** button that allows users to back up tool sets and Profiles easily.

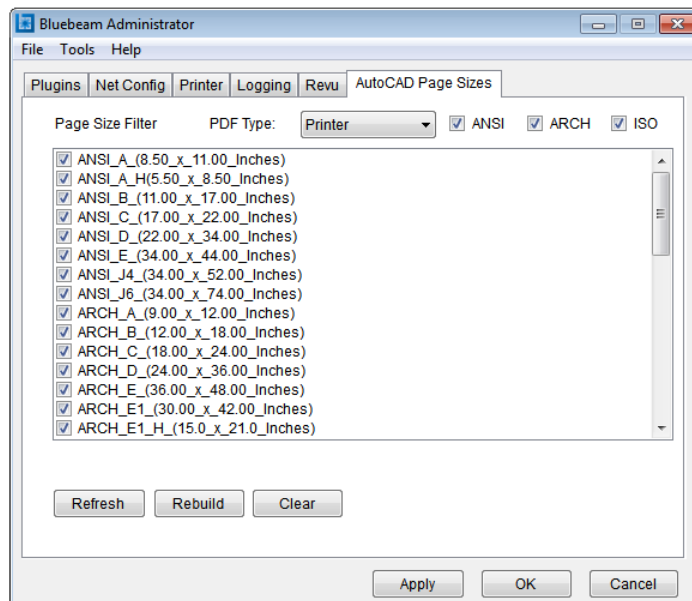
The web browser plugin to IE can also be enabled and disabled from this tab.

Reset Settings can be helpful in resolving some technical issues by resetting all data stored in the *UserPreferences.xml* file. See ["Section 4 – Revu Settings" on page 27](#) for more information.

AutoCAD Page Sizes Tab (CAD and eXtreme Editions Only)

The AutoCAD Page Sizes tab shows all available page sizes in the Bluebeam PDF printer. This tab allows you to select which standard large format page sizes you wish to appear in your drop-down list of page sizes in AutoCAD (ANSI, ARCH, or ISO).

Check/uncheck the specific type (ANSI, ARCH, and/or ISO) or the individual page size from the list to select the ones you wish to appear in the page size list for AutoCAD.





Managed Configurations

Section 3



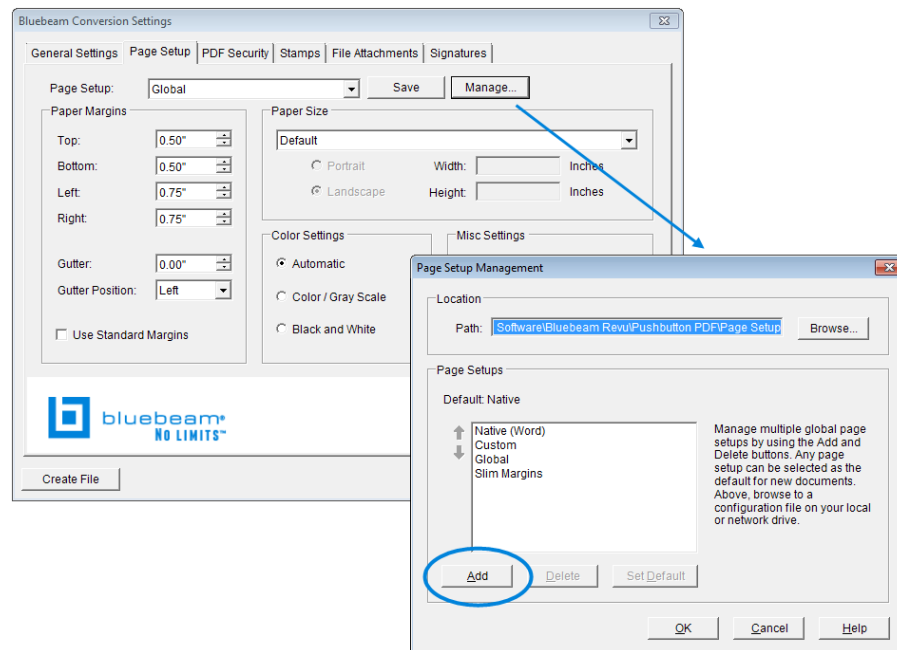
Centralizing Net Configurations

Section 3.01

The Net Config tab of the Bluebeam Administrator manages the configurations for all Bluebeam supported plugin applications as well as the Bluebeam PDF printer. These settings apply to elements such as stamps, printer page sizes, and global page setups for all Bluebeam plugins.

When a Custom or Global page setup is selected within the Bluebeam plugin for your application it will be saved to this directory for others to access.

On the Page Setup tab, click **Manage** to open the Page Setup Management dialog box, then click **Add** to create a new, customized page setup.

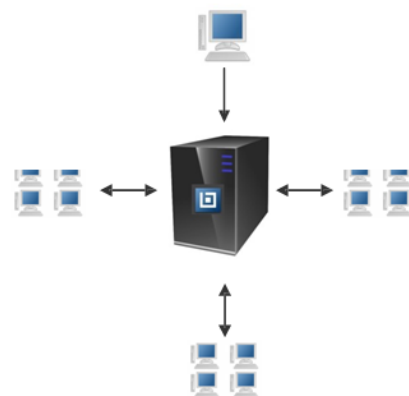


Centralization

Locations for these critical elements used in daily PDF creation workflow, such as printer page sizes, text stamps, and plugin settings can all be centralized through the Bluebeam Administrator's Net Config tab. Stamps and printer page sizes will automatically show up in the drop-down menus of all workstations that are linked to the managed location. A network configuration can also be defined during deployment of the software.

Centralizing Stamps, Tool Sets, and custom page sizes allows the systems administrator or CAD manager to update the database for all users at once.

This efficiently enhances the rate of workflow. Users are also able to contribute to the database if rights are given.

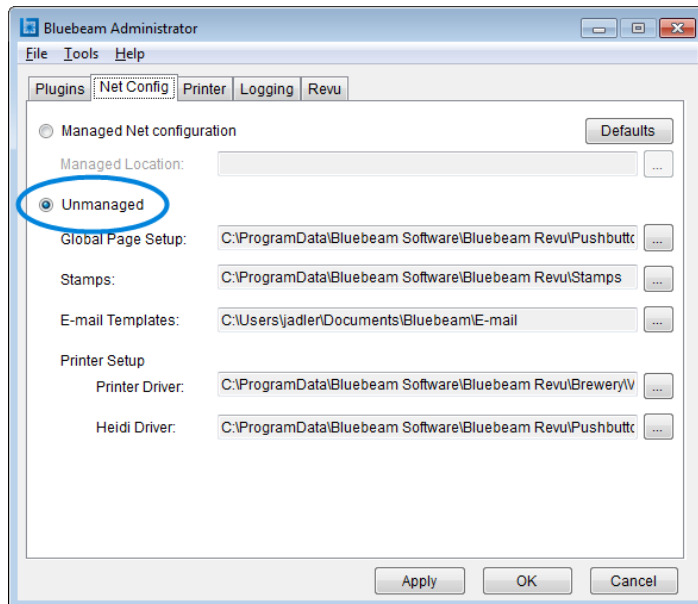




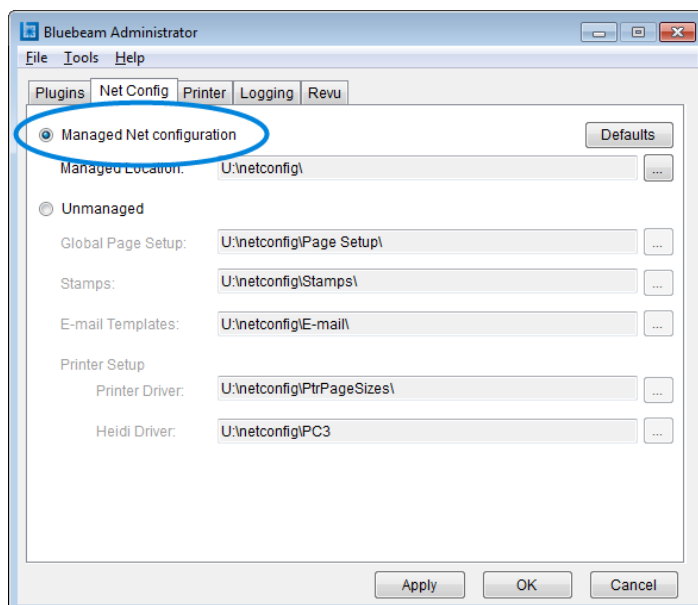
Managing Net Configurations

Section 3.02

There are two main selections from the Net Config tab, the Managed Net Configuration or Unmanaged.



In a standard installation, Net Config defaults to the **Unmanaged** profile. All settings are stored locally in various locations on each workstation.

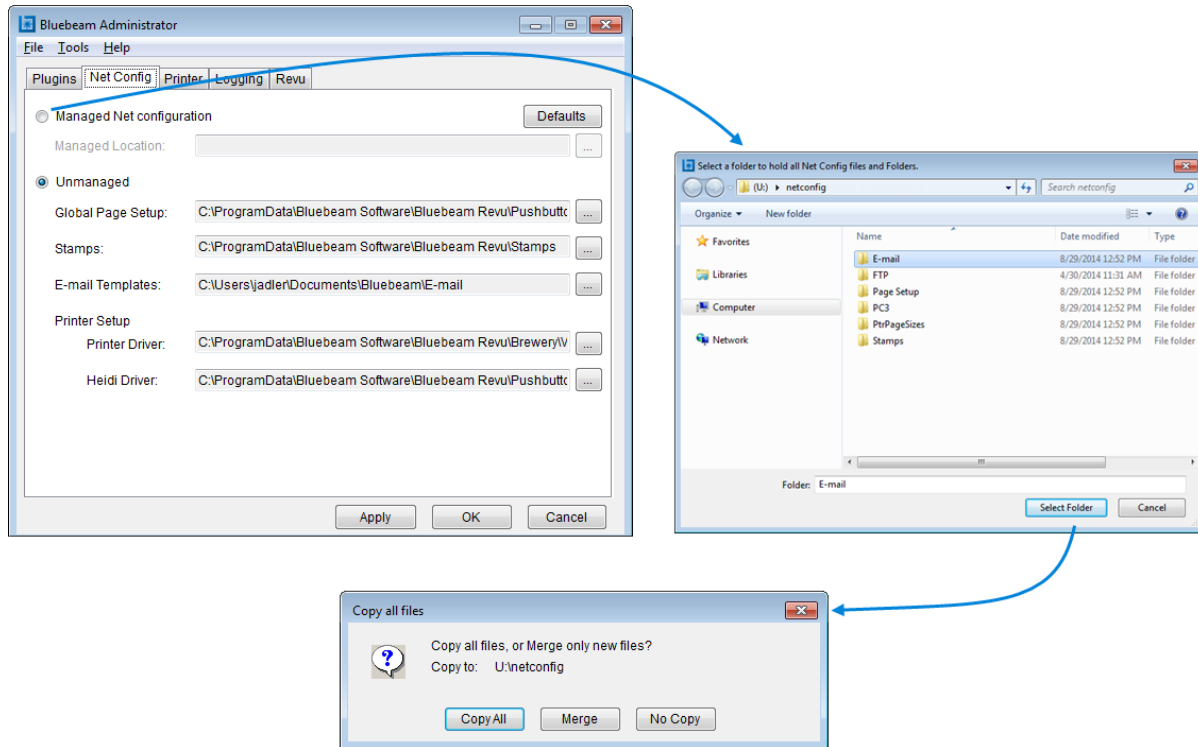


By pointing the Net Config path to **Managed Net Configuration**, new stamps and printer page sizes become centralized at the location specified.

If there is anyone in your organization that is responsible for creating custom Stamps and custom Printer page sizes, be sure to gather those items and copy them into their respective folders on the centralized location before selecting the **Managed Net Configuration** location. This will ensure they are copied over to the Net Configuration location.

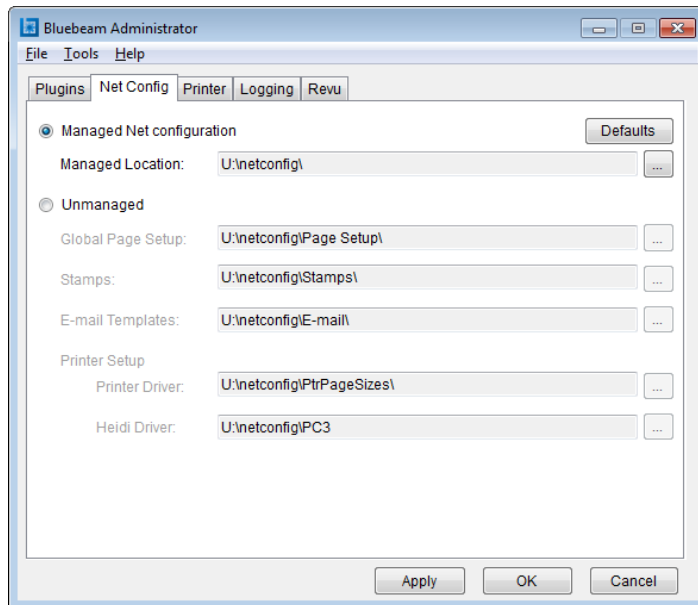
Specific settings can be centralized by choosing **Unmanaged**, then browsing to the desired location for those preferences.

To change from Unmanaged to a Managed Net configuration, open the Bluebeam Administrator to the Net Config tab and select **Managed Net configuration**. A dialog box will appear that allows you to browse for a folder or create a new folder to store your settings.

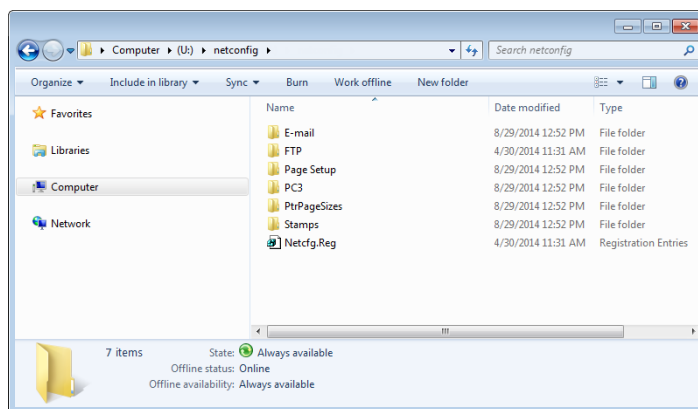


After clicking **Select Folder**, choose one of the copy options:

- **Copy All** adds all defaults to the network directory.
- **Merge** takes all locally defined settings and merges them with any existing configurations in the shared folder.
- **No Copy** will point to the network location and not integrate any local settings to the network location.



The new Net Config setting will be shown in the Bluebeam Administrator.



The folder structure shown on the left will be created in the designated folder.

Note: You can restrict users from making modifications to the shared network directory by setting folder permissions to read-only. They will be able to point to the directory but prohibited from modifying files within the directory.

Note: When deploying a managed Net Configuration, the computer **must** be restarted after Revu is installed (but **before** opening the Bluebeam Administrator) in order for the NetConfig setting to apply. Failure to restart first will apply the default (local) paths for the Net Config.

Net Config in Deployment



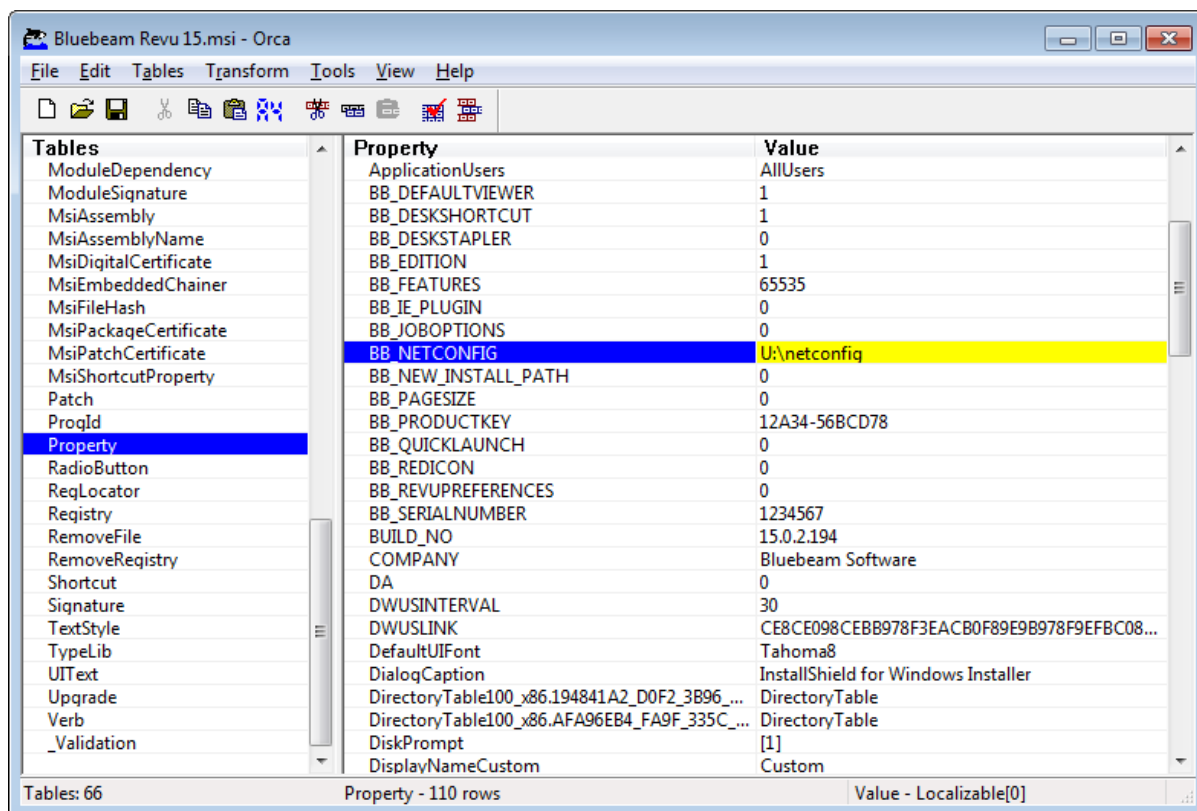
Section 3.03

You can also define the Net Config location during deployment. Both fully qualified and UNC paths are supported.

MSI Deploy

To designate a central location for your Net Config settings, enter the path (UNC or absolute) as the Value of the BB_NETCONFIG property in your MSI editor.

Note: Editing an MSI invalidates Bluebeam's digital signature on the file, which might be problematic in some environments. To avoid this, pass any MSI Properties as part of a command line script or apply an MST Transform file. See "Appendix B" on page 58 for details.



Note: When deploying a managed Net Configuration, the computer **must** be restarted after Revu is installed (but **before** opening the Bluebeam Administrator) in order for the NetConfig setting to apply. Failure to restart first will apply the default (local) paths for the Net Config.



Revu Settings

Section 4



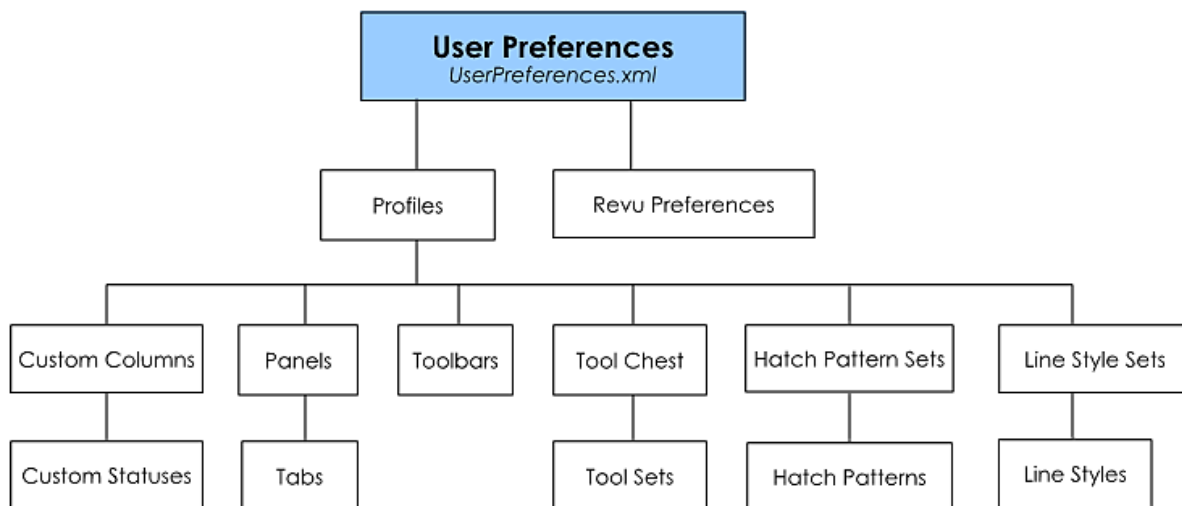
In an enterprise environment, centralizing your files and settings offers many potential advantages. The tradeoff to this option is that workstations become more dependent on the network for daily operations; some shared resources (for example, Tools Sets or Profiles) can be used in an “offline mode,” but they will not benefit from things like synchronized updates until the user is back on the network (see ["Section 4.08 – Sharing Profiles on a Network" on page 37](#) and ["Section 4.10 – Managing Tool Sets" on page 41](#) for more information).

Centralization offers the ability to standardize integration among users, grants the system administrator or CAD manager increased security, and drastically speeds up the time needed for everyone to update configurations.

With this in mind, Bluebeam has designed Revu such that critical features needed during everyday workflow can easily be managed from one location. These settings are stored in a hierarchy.

In this hierarchy, User Preferences encompass all of the features and store them locally on the workstation. Profiles contain all other elements of the Revu interface including panels and toolbars, as well as what tool sets are displayed in the Tool Chest.

Bluebeam Revu’s Hierarchy of Configurable Settings

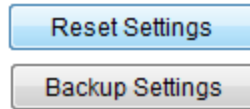


By default, all of this information is stored locally in the user’s Revu\15 folder:

C:\Users*<Username>*\AppData\Roaming\Bluebeam Software\Revu\15

Reset Settings

The Reset Settings button on the Revu tab of the Bluebeam Administrator archives all data of the hierarchy into a *Revu Settings Backup.zip* file stored in the `Revu\15` folder. When Revu recognizes that a *UserPreferences.xml* file is not present, it will regenerate the file with default characteristics.



User Preferences



Section 4.02

The top most layer of the hierarchy contains the user preferences. User preferences are contained within an .xml file named *UserPreferences.xml*. This file contains settings that are user specific as well as settings that should be common to all Profiles.

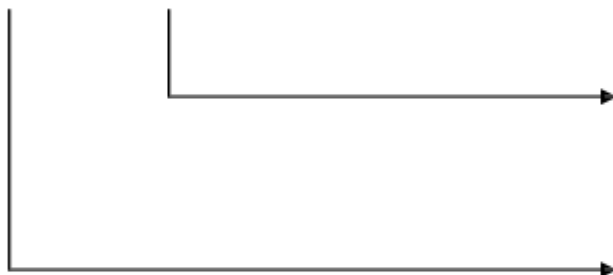
User Preferences cannot be centralized or deployed in a network location. This is because low-level settings, such as the username data attributed with a markup are included in this location. However, it is recognized that there is a need to standardize preference traits across users in an organization. To accommodate this requirement, Bluebeam Revu allows you to import and export these preferences through a file called *RevuPreferences.xml*.

- **User Preferences** are workstation specific and cannot be managed or centralized to a server.
- **Revu Preferences** are attributes of the *UserPreferences.xml* file that you can export to another workstation. This file can also be stored on the network and included as part of a deployment.



Manageable Items:

- Revu Preferences
- Profiles
- Tool Sets
- Stamps
- Hatch Patterns
- Printer Page sizes
- Plugin Settings



Workstation Specific Items:

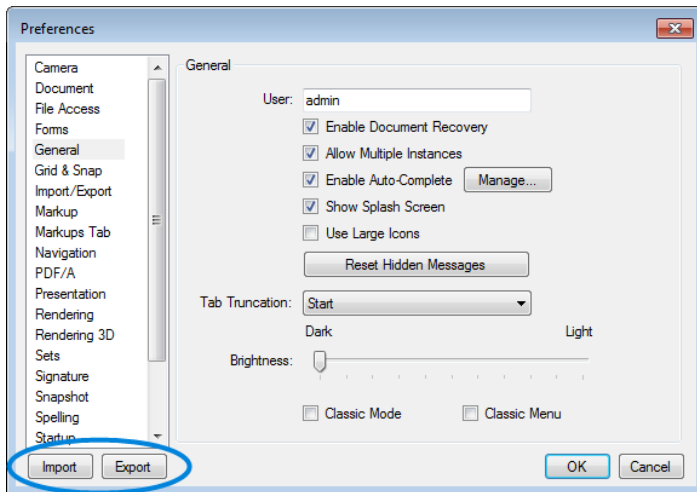
- Revu\15 folder
- *UserPreferences.xml* file
- Debugging logs



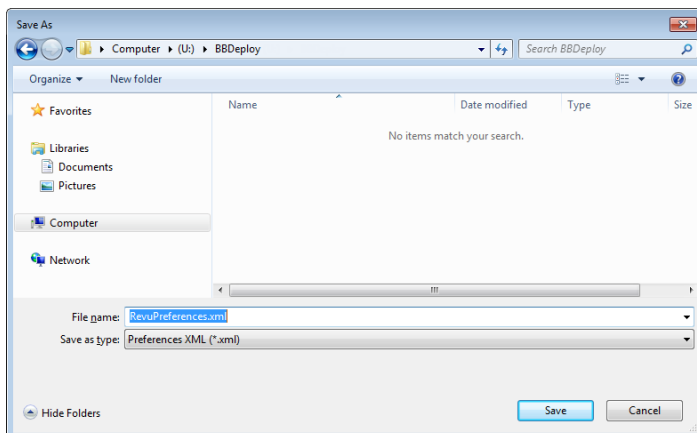
Importing and Exporting Revu Preferences

RevuPreferences.xml contains manageable preference data stored in the Preferences window. This window is accessed by clicking **Settings > Preferences** (or pressing CTRL+K) inside Revu. To export these settings, simply click **Export** and save them to any location on your network. Importing can then be done locally by each individual user, or the path and file name can be defined during deployment.

Preferences Menu
Detailed descriptions of each category in the Preferences window can be found in the *Bluebeam Revu Help Guide*. You can access this help guide through the Help menu of Revu.



The **Import** and **Export** buttons are located in the Preferences list.



When exporting preferences, keep the default file name *RevuPreferences.xml*.

Deploying Preferences



Section 4.04

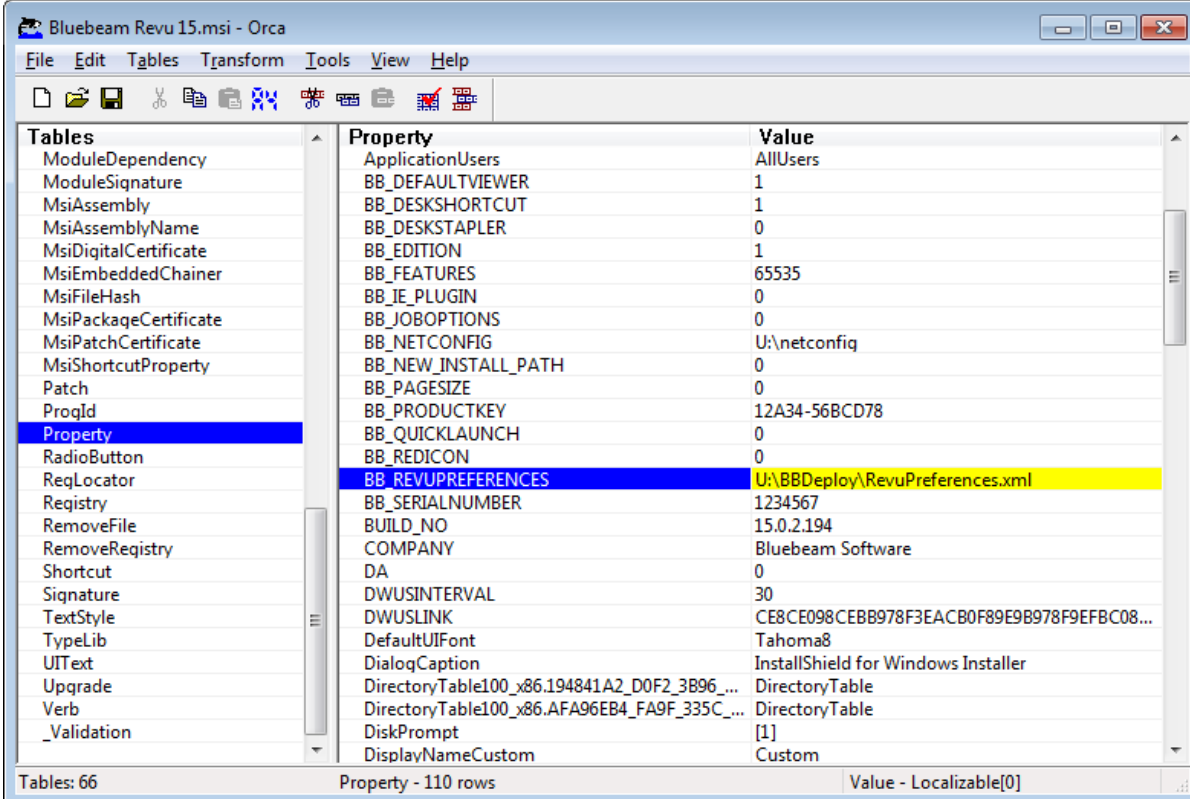
Exported preferences can be deployed at installation using the `BB_REVUPREFERENCES` parameter during the MSI Deploy. An example is given below.

When upgrading, deploying *RevuPreferences.xml* will give the user an updated set of preferences without overriding any other existing data such as Profiles.

MSI Deploy

Revu CAD silent MSI deploys and specifies a Revu Preferences file to be deployed:

Note: Editing an MSI invalidates Bluebeam's digital signature on the file, which might be problematic in some environments. To avoid this, pass any MSI Properties as part of a command line script or apply an MST Transform file. See "Appendix B" on page 58 for details.



Property	Value
ApplicationUsers	AllUsers
BB_DEFAULTVIEWER	1
BB_DESKSHORTCUT	1
BB_DESKSTAPLER	0
BB_EDITION	1
BB_FEATURES	65535
BB_IE_PLUGIN	0
BB_JOBOPTIONS	0
BB_NETCONFIG	U:\netconfig
BB_NEW_INSTALL_PATH	0
BB_PAGESIZE	0
BB_PRODUCTKEY	12A34-56BCD78
BB_QUICKLAUNCH	0
BB_REDICON	0
BB_REVUPREFERENCES	U:\BBDeploy\RevuPreferences.xml
BB_SERIALNUMBER	1234567
BUILD_NO	15.0.2.194
COMPANY	Bluebeam Software
DA	0
DWUSINTERVAL	30
DWUSLINK	CE8CE098CEBB978F3EACB0F89E9B978F9EFBC08...
DefaultUIFont	Tahoma8
DialogCaption	InstallShield for Windows Installer
DirectoryTable100_x86.194841A2_D0F2_3B96_...	DirectoryTable
DirectoryTable100_x86.AFA96EB4_FA9F_335C_...	DirectoryTable
DiskPrompt	[1]
DisplayNameCustom	Custom

Note: A fully qualified path or UNC path, including the file name, to *RevuPreferences.xml* must be included with the parameter.

Deploying Preferences Post-Installation

For existing installations (Revu 11 and above), there is a way to push out and merge preference changes with existing user preferences. Follow the steps in "[Section 4.03 – Revu Preferences](#)" on page 31 to modify and export a copy of *RevuPreferences.xml*.

When merging preferences, you need to edit *RevuPreferences.xml* with a text editor and add `Merge="True"` (case sensitive) into the header of this file in order to merge the settings (see below). When doing this it is recommended that you delete everything but the settings you want to change from the XML so as not to change any other settings.

```
<RevuPreferenceDictionary Version="1" Merge="True">
```

Make these edits to your *RevuPreferences.xml* file and copy it to

`C:\ProgramData\Bluebeam Software\Bluebeam Revu\Revu`. Revu looks at this folder when it launches for new preferences. Existing user's settings are stored in a *UserPreferences.xml* file located in a Bluebeam folder under the user's roaming profile in Windows. This *UserPreferences.xml* gets saved and updated when Revu closes. In order for these new preferences to merge, the modified date of the *RevuPreferences.xml* file in the ProgramData folder must be newer than date of the *UserPreferences.xml* file for the user. If it isn't, Revu will ignore the preferences so as not to overwrite newer settings with something that might be outdated.

For example, if you are running your own Studio Server, you will need to change the URL of the Studio Server that Revu connects to in order to direct it to your Server instead of Bluebeam's. Here is an edited version of *RevuPreferences.xml* to make this change.

```
<?xml version="1.0" encoding="utf-8"?>
<RevuPreferenceDictionary Version="1">
  <Studio>
    <Force.Proxy>False</Force.Proxy>
    <ServerCache>{"active":{"RequestedAuthMode":0,"ServerEmail":null,
"ServerPassword":"","ServerURL":"Studio.CompanyXYZ.com",
"ServerUserName":""},"servers":[{"RequestedAuthMode":0,
"ServerEmail":null,"ServerPassword":"","
"ServerURL":"Studio.CompanyXYZ.com","ServerUserName":""}]}}
  </ServerCache>
  <Toolbar.Integration.Only>True</Toolbar.Integration.Only>
  <URL>Studio.CompanyXYZ.com</URL>
</Studio>
</RevuPreferenceDictionary>
```

There are different ways you can deploy this file to your users, but to test this process, follow these steps:

1. Close Revu
2. Copy *RevuPreferences.xml* to `C:\ProgramData\Bluebeam Software\Bluebeam Revu\Revu`
3. Open *RevuPreferences.xml*, add a space and then Save it. This will ensure the date modified is later than Revu's *UserPreferences*.
4. Open Revu and look at the Preferences to see that this setting has been changed.



Best Practices for Deploying Revu Settings

See the noted sections in parentheses for instructions on the related step. A step-by-step walkthrough of this procedure is outline in ["Appendix C" on page 61](#)

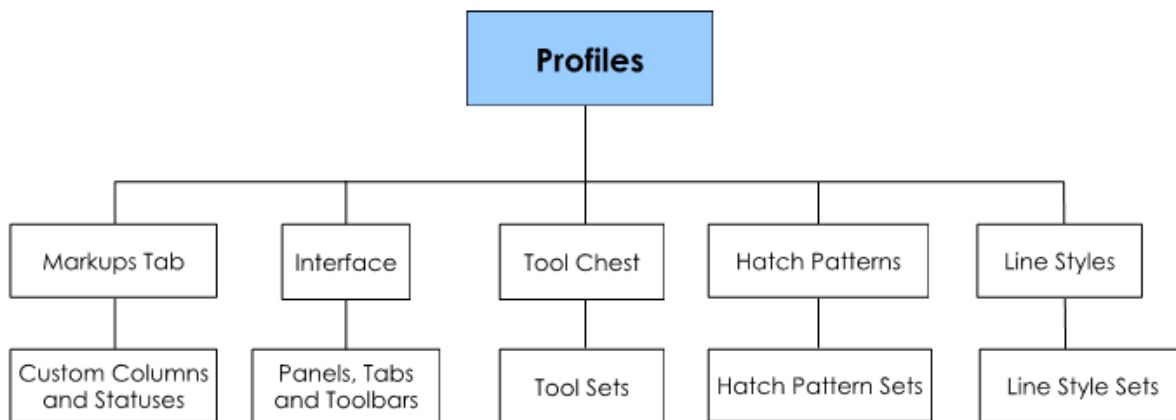
1. Install Revu on a workstation used for the master configuration.
 - a. Configure preference settings then export them to a central location. (["Section 4.03 – Revu Preferences" on page 31](#))
 - b. Configure Profiles. (["Section 4.07 – Read-Only Profiles" on page 36](#))
 - c. Add tool sets and hatch patterns to configured Profiles. (["Section 4.10 – Managing Tool Sets" on page 41](#) and ["Section 4.14 – Managing Hatch Pattern Sets" on page 46](#))
 - d. Export the Profiles to a central location with Include Dependencies checked. (["Section 4.08 – Sharing Profiles on a Network" on page 37](#))
2. Define the Net Config location through the Bluebeam Administrator (["Section 3.02 – Managing Net Configurations" on page 23](#))
 - a. Add stamps, printer page sizes, etc to the new location.
3. Deploy Bluebeam Software (["Section 1.03 – Deployment Recommendations" on page 9](#))
 - a. Configure authorization information (["Section 1.04 – Authorization" on page 10](#), ["Section 1.06 – MSI Deploy Installation" on page 12](#))
 - b. Configure installation parameters (["Section 1.06 – MSI Deploy Installation" on page 12](#))
 - c. Define location of Net Config settings (["Section 3.03 – Net Config in Deployment" on page 26](#))
 - d. Define location of RevuPreferences.xml (["Section 4.04 – Deploying Preferences" on page 32](#))
4. Deploy your configured Profiles through the command line argument or post-install customization. (["Section 4.17 – Revu Command Line Parameters" on page 52](#), ["Section 4.16 – Post-Installation Customization" on page 50](#))

Profiles

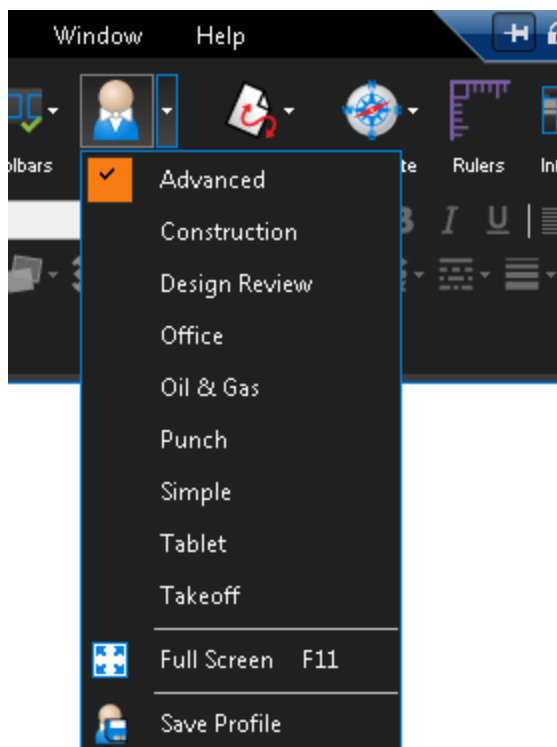


Section 4.06

Profiles are the second layer in the hierarchy, designated with a .bpx extension. They contain the overall layout of the Revu user interface such as toolbar positions, Tool Chest contents, and panel configurations. Since Profiles do not store any user specific data, they are well suited for centralization in a network environment.



Profiles can also be used to shape the user interface of Revu for particular job operations within an organization. You can create a simplified interface by disabling all but the most simple markup functions for basic users, while allowing advanced features for other users that require them.



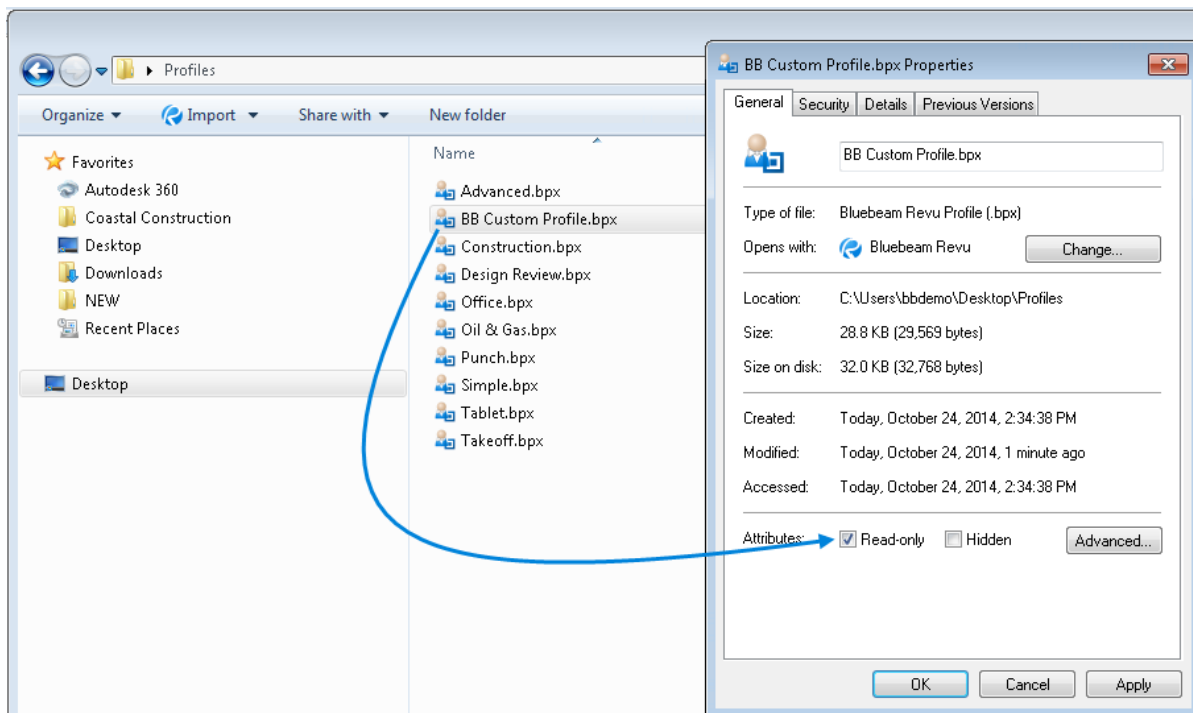
Read-Only Profiles



Section 4.07

By default, Revu is setup to remember the last known settings to the user interface once it is closed. When a user makes changes to a Profile, such as enabling a tool bar or hiding the Properties tab, these changes are saved to the selected Profile. In organizations where Profiles are standardized or centralized, systems administrators will want to prohibit this action from affecting other users whom also access the same Profile.

With this in mind, this function can be disabled by adding read-only attributes to the Profile. In this state, a Profile cannot be overwritten when Bluebeam Revu is shutdown. Any changes made to the Profile will not be saved when the program is closed.

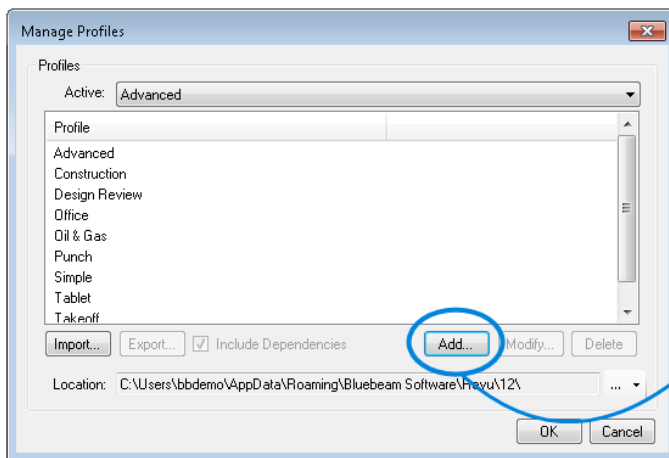


Sharing Profiles on a Network

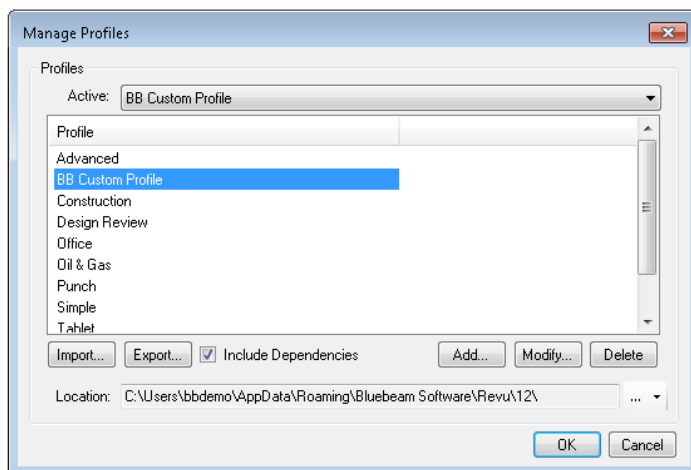
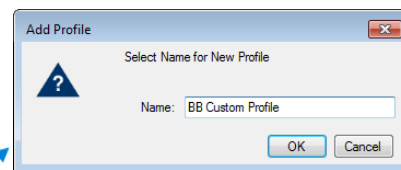


Section 4.08

Profiles can be centralized by selecting a network location where they are stored. Use the Browse button next to the Location field to point a workstation to the shared location. Any new or modified Profiles stored in this location will immediately be available to all users on the network. Users who go offline can continue to use the profile that was active when they went offline, but updates and some of the shared elements of other profiles (notably, some tool sets) will not be available until they go online again. Note that shared Profiles are read-only: any changes made by a user (for example, turning a toolbar on or off), are made for their session only and will be lost when Revu is closed.



Click **Add** from the Manage Profiles window and name the new Profile in the Add Profile dialog box that appears.

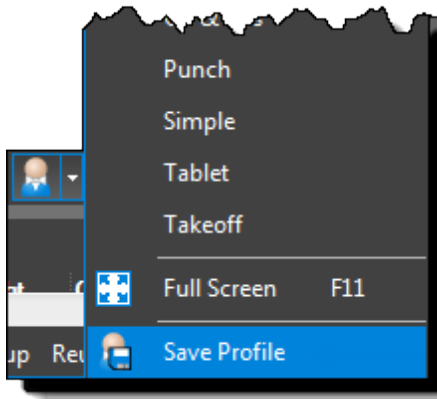


Select the newly created Profile and click **OK** when finished.

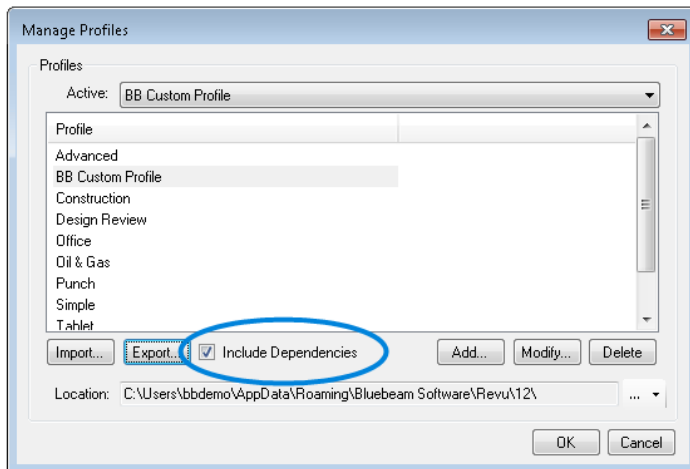
Change the Revu interface by turning on and off toolbars, adding tool sets, and so on.

Once a Profile is created, it may be exported to a central location. The Profile can then be deployed through a command line parameter (See "[Section 4.17 – Revu Command Line Parameters](#)" on page 52).

Export a Profile

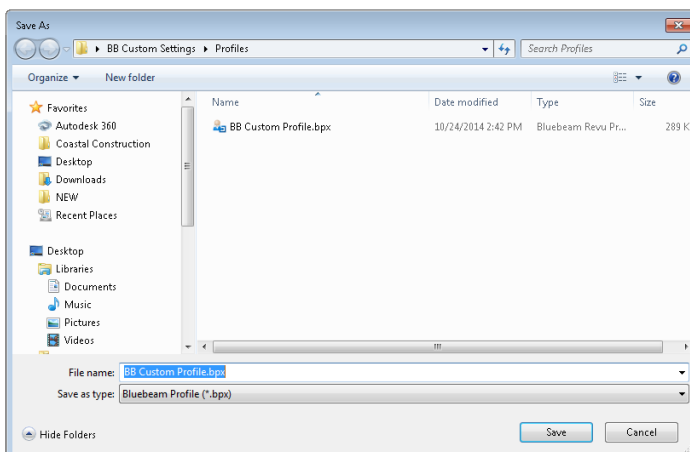


Save the Profile before exporting or else your changes will not get exported.



Include Dependencies: This will store all items in the Profile along with it. This means that custom tool sets, columns and statuses, as well as hatch patterns and line style sets will also be stored within the Profile.

Check this box if you want to include these resources within your Profile when it is exported.

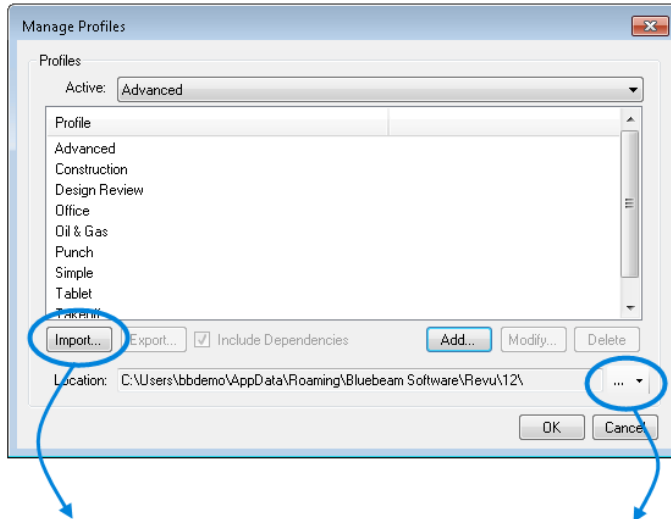


The exported file will now show up in the folder you save it to.

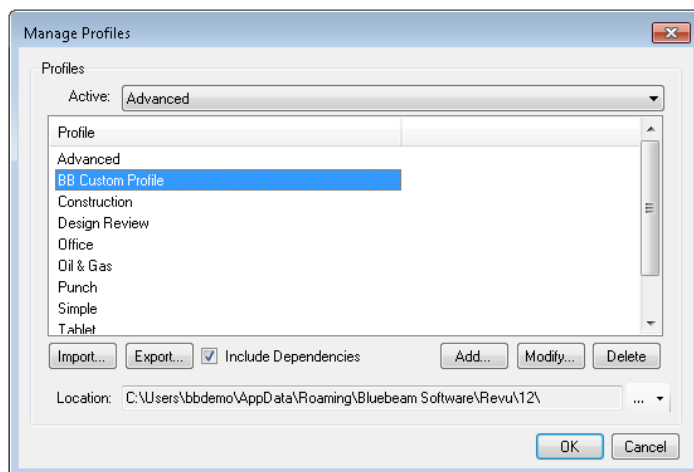
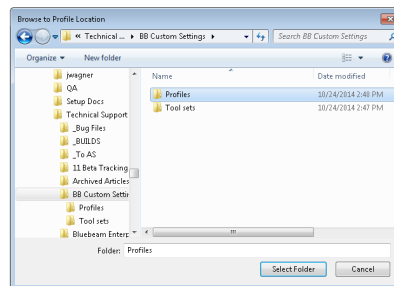
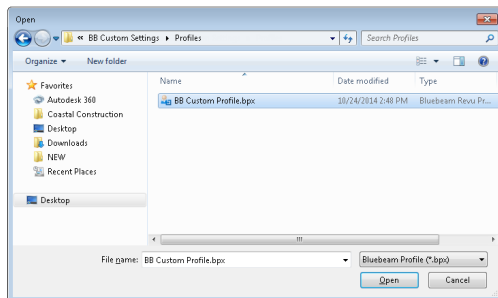
Once a Profile is created, it may be imported to each workstation manually by the user or deployed through a command line parameter (See "[Section 4.17 – Revu Command Line Parameters](#)" on page 52).

Import a Profile

Exported Profiles can be copied to a network drive or sent directly to users who can simply double-click the Profile (.bpx) file to import it into Revu automatically. Profiles can also be imported from within the application.



Click **Import** to select a Profile to import. You can also browse to a location where Profiles are stored to configure Revu to work from a shared Profile directory by clicking the browse (...) button to the right of the **Location** field.



The imported file will now show up in the Profiles list of your workstation, or the available Profile in the shared Profile directory will be listed.

Tool Chest



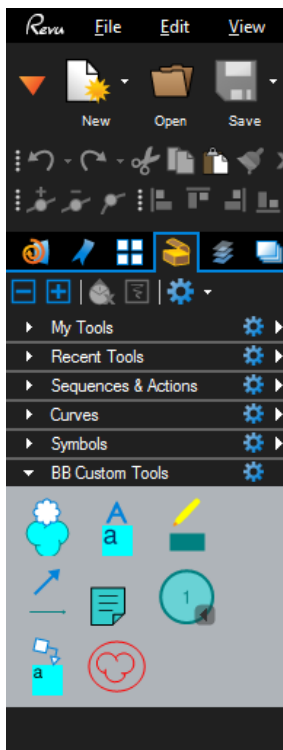
Section 4.09

Revu includes a powerful advantage for making the process of marking up PDF files much more efficient. Once a markup is created, you can recall it using the Tool Chest. The Tool Chest stores groups of tool sets which allow users to conveniently store frequently used markups in a central, easily accessible panel. Remember that Tool Sets (and Hatch Patterns) are included with exported Profiles when the “Include Dependencies” option is checked. Administrators can create and share these tool sets among different users of Revu across a network.

Importing/Exporting vs. Adding Tool Sets

There are two ways for users to share tool sets over a network. Importing/exporting or adding.

- **Add** allows a tool set saved in a central location to be recognized in the Tool Chest without copying it onto the workstation locally. This allows the tool set to easily be updated. Use Windows File Permissions on the .btx files to control who can check-out the tool sets for editing. (See "Section 4.11 – Locking Tool Sets" on page 43.)
- **Import** saves tool sets directly to the user’s system locally. This allows the user to customize their tool set without affecting anyone else.
- **Export** saves your toolset to a specified directory. Exported tool sets can then be shared or archived.



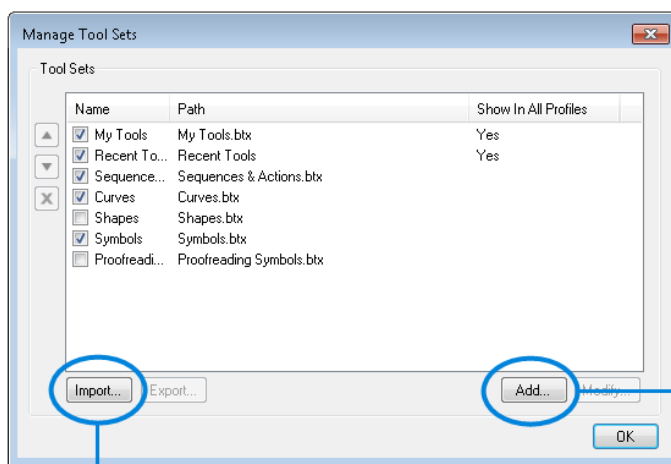
Managing Tool Sets



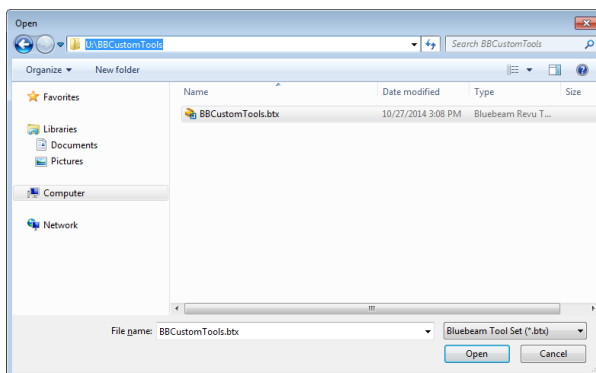
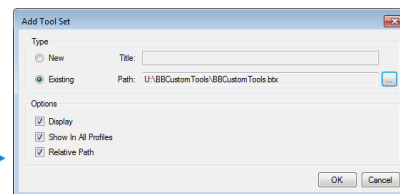
Section 4.10

All tool sets are saved as a .btx file that can be copied to a network drive or sent directly to users. As with Profiles, users can double-click a .btx file to import it into Revu automatically. Additionally, tool sets may be imported from within the application or deployed through a command line parameter (See "Section 4.17 – Revu Command Line Parameters" on page 52). Tool sets may also be shared from a centralized location. Shared tool sets can be used while offline, but will not be updated and cannot be checked out while offline.

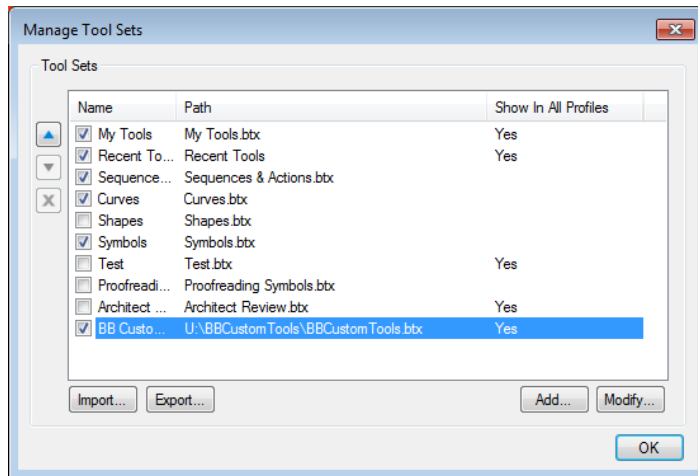
Click on the Manage Tool Sets icon to bring up the window shown below. Select either **Add** or **Import** to bring a new or existing tool set into your Tool Chest.



Add recognizes the tool set on a mapped network without bringing it into the workstation locally.



Use **Import** to allow user customization or when tool sets are being exchanged within a workstation or e-mailed.



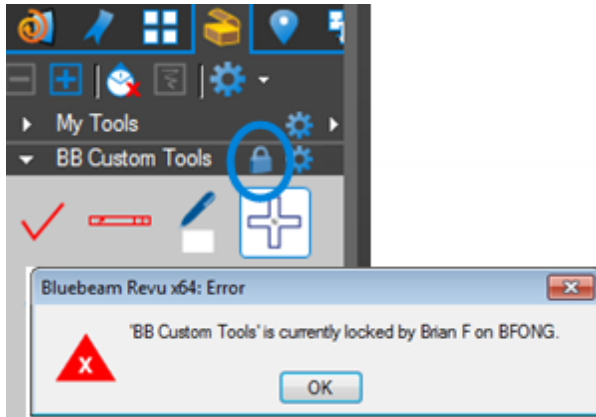
The new tool set will show up in the Manage Tool Sets window and in your Tool Chest.

Locking Tool Sets

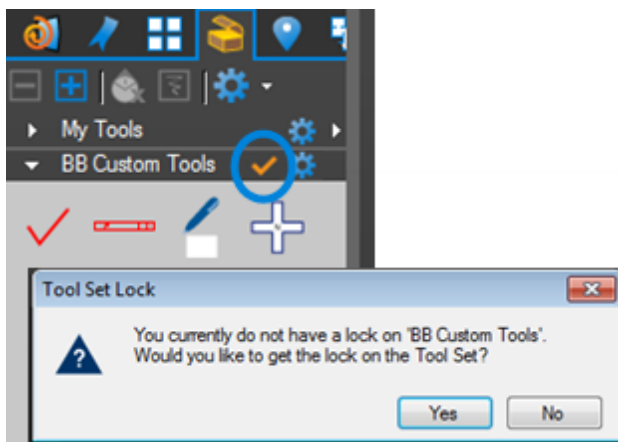


Section 4.11

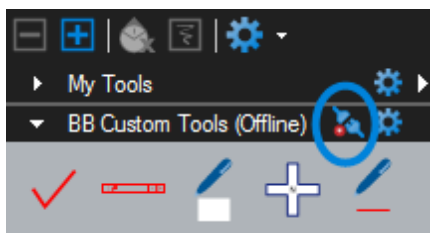
An administrator may grant any team member permission to the lock which would allow them to provide updates. If the tool set is locked, you may attempt to obtain permission by clicking on the Lock icon.



Tools shared across the network are considered locked, as indicated by a blue lock icon in their title bar. This prevents more than one user from making changes at any one time.



If you have write permissions to the file, the lock icon will change into a checkmark indicating that you may now add tools to that particular tool set.



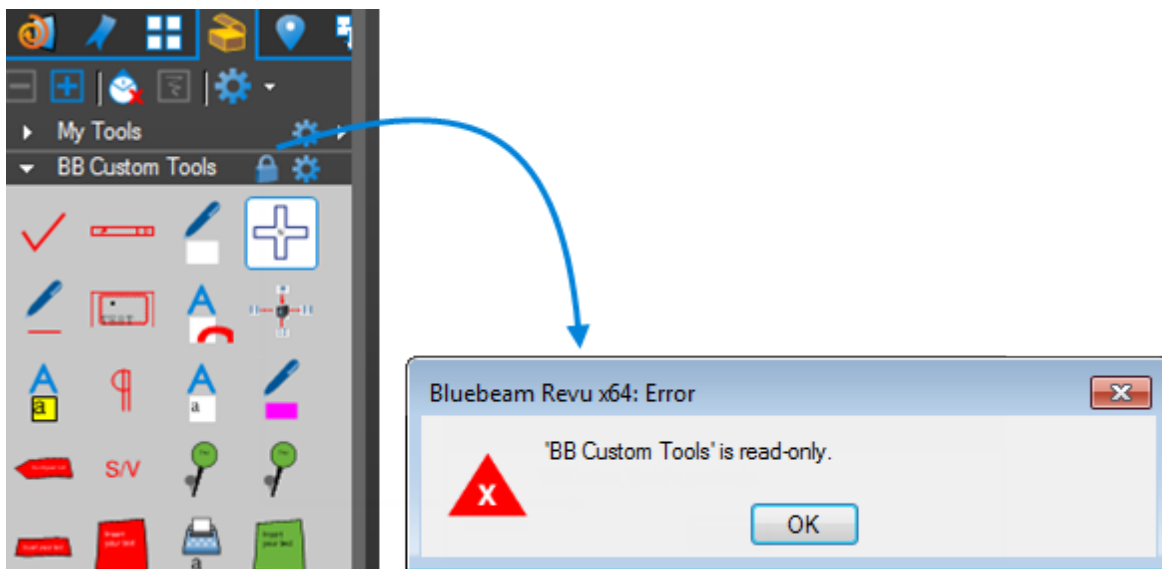
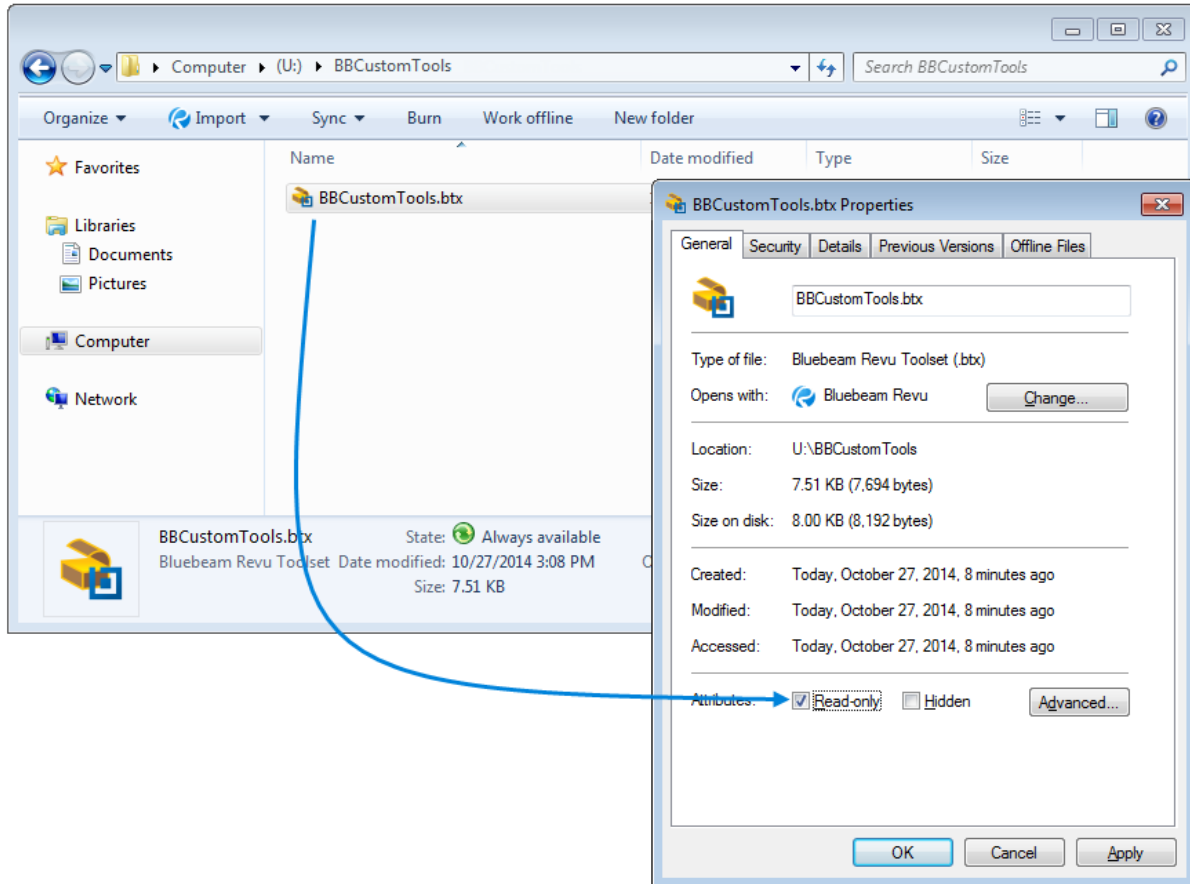
If you go offline, shared tool sets will go into an offline mode. Tool sets cannot be checked out when in offline mode.

Read-Only Tool Sets



Section 4.12

Any tool set can be marked read-only. When in this state, the tool set cannot be unlocked or modified until that attribute is removed.

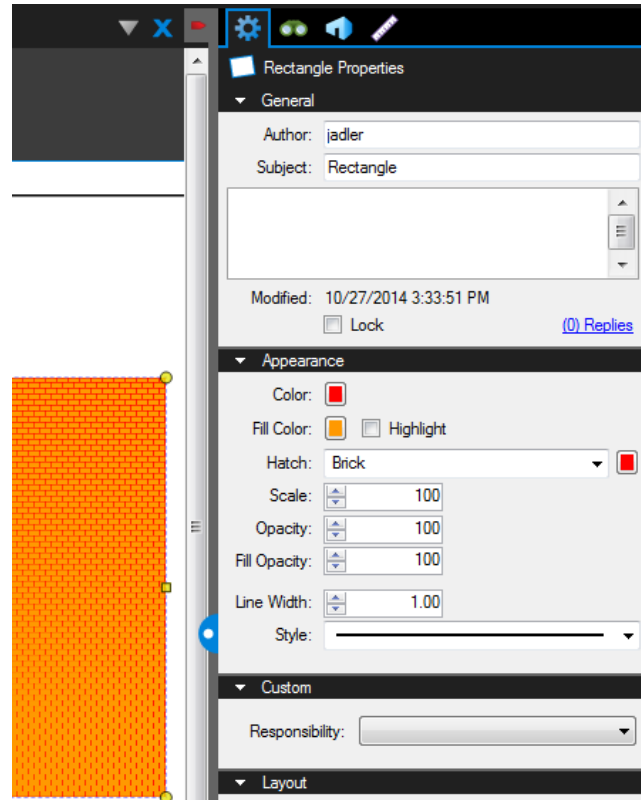


Hatch Patterns

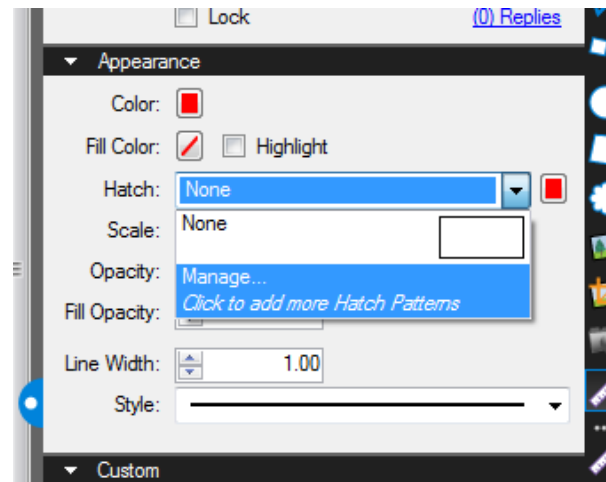


Section 4.13

Revu includes several standard hatch patterns (brick, diagonal, weave, and so on) used for filling in markups. Hatch patterns are stored in Hatch Pattern Sets, designated with the .bhx file extension.



Hatches may be centralized on a network drive and are imported/exported or added in the same fashion as Tool Sets.



Managing Hatch Pattern Sets



Section 4.14

Hatch pattern sets are managed through the Manage Hatch Pattern Sets window. As with Profiles, hatch patterns may also be imported to each workstation or deployed through a command line parameter (See "Section 4.17 – Revu Command Line Parameters" on page 52).

Select either **Add** or **Import** to bring a new or existing hatch pattern set into your Hatch Pattern Set list.

The new set will show in the Manage Hatch Pattern list as well as the Hatch drop down in Revu.

SharePoint & ProjectWise Integration



Section 4.15

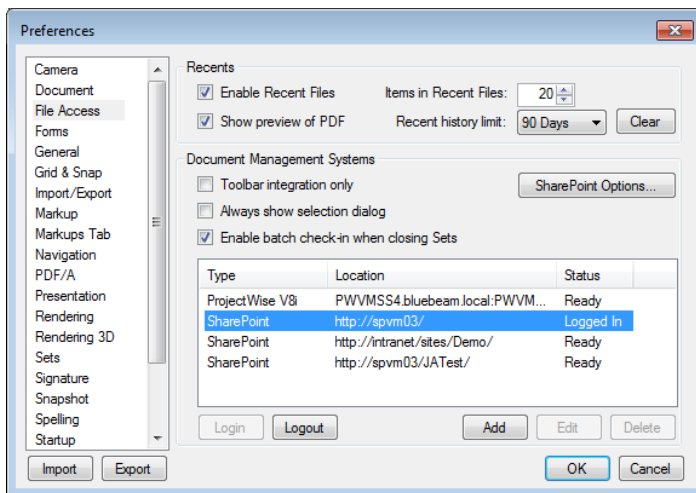
Revu has direct integration into Bentley ProjectWise and Microsoft SharePoint document management systems. You can Check-In, Checkout and view files from either a ProjectWise DataSource or SharePoint Document Library directly from within the Revu interface.

To Login

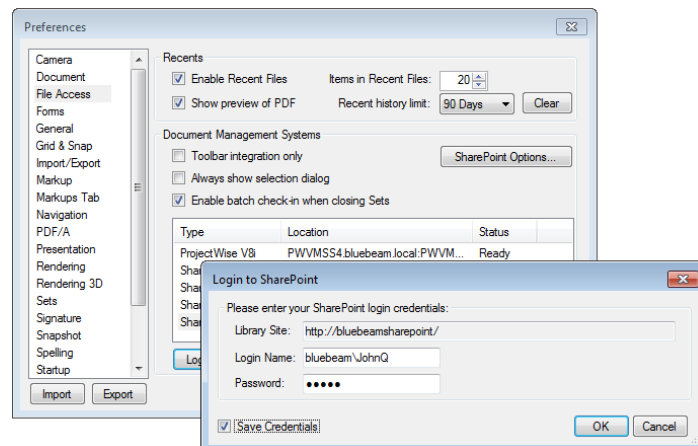
By default, your Windows account login credentials will be attempted first whenever you login to a SharePoint site. If the login fails, you will then be prompted to enter credentials for that site. Those credentials can be stored in Revu to suppress any this prompt.

Go to **Settings > Preferences** (or press CTRL+K). Here you can add Login and Account information for ProjectWise or SharePoint. To setup a login click **Add**, choose the system from a pull down list and enter your login name and password.

Note: When RevuPreferences are exported, login credentials are not included. Only the site name or data source are exported.



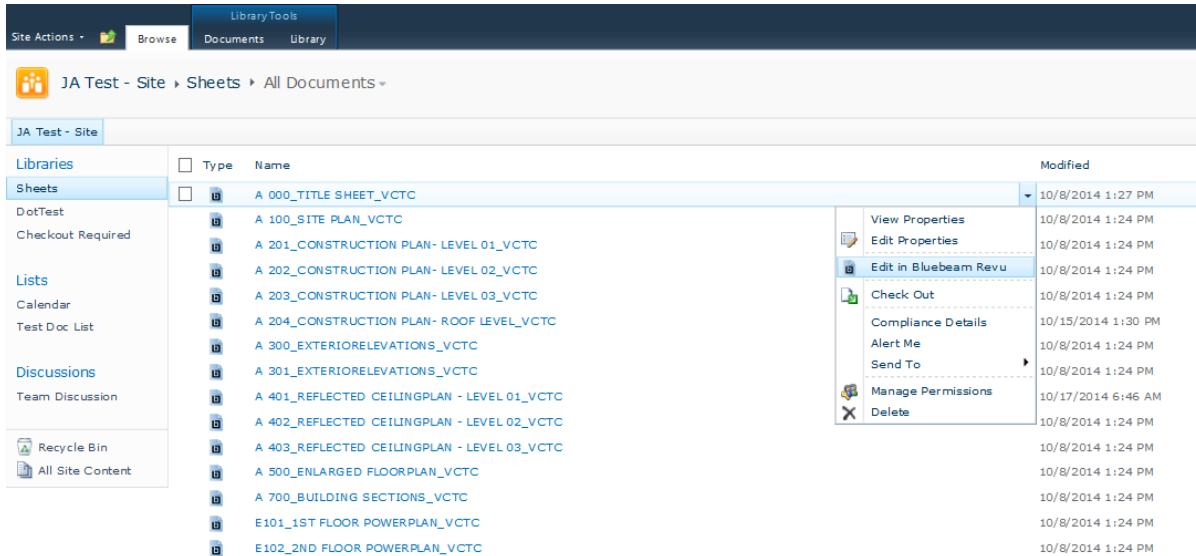
Revu can store login data to suppress any future prompts.



Revu Server-Side SharePoint Integration Guide

Revu can be integrated into the Internet Explorer browser so that an edit option appears in the SharePoint dropdown as shown below. This is required for any organization looking to integrate SharePoint check-in/check-out from Internet Explorer.

This configuration is global to your SharePoint server and cannot be enabled only for specific sites or libraries. The Bluebeam icon and Edit In strings are optional and do not affect the functionality. If users who access these files do not have Revu, the files will still open in their default PDF viewer.



- Download the [icpdf.gif](http://www.bluebeam.com/us/support/articles/images/icpdf.gif) from <http://www.bluebeam.com/us/support/articles/images/icpdf.gif>, then add it to this folder:
 - SharePoint 2013:** %COMMONPROGRAMFILES%\Microsoft Shared\web server extensions\15\TEMPLATE\IMAGES
 - SharePoint 2010:** %COMMONPROGRAMFILES%\Microsoft Shared\web server extensions\14\TEMPLATE\IMAGES
 - SharePoint 2007:** %COMMONPROGRAMFILES%\Microsoft Shared\web server extensions\12\TEMPLATE\IMAGES
- Navigate to the following path:
 - SharePoint 2013:** %COMMONPROGRAMFILES%\Microsoft Shared\web server extensions\15\TEMPLATE\XML\DOCICON.XML
 - SharePoint 2010:** %COMMONPROGRAMFILES%\Microsoft Shared\web server extensions\14\TEMPLATE\XML\DOCICON.XML
 - SharePoint 2007:** %COMMONPROGRAMFILES%\Microsoft Shared\web server extensions\12\TEMPLATE\XML\DOCICON.XML
- Add (or replace) the following line into the *DOCICON.XML* file:

```
<Mapping Key="pdf" Value="icpdf.gif" EditText="Bluebeam Revu"
OpenControl="Revu.Launcher" />
```

Note: Only add this line if there is no existing entry for “pdf” in *DOCICON.XML* ; if there is an existing entry, be sure to replace it. This might not function properly if there are two entries for Mapping Key="pdf" in *DOCICON.XML*.

4. Restart IIS. The service must be restarted before SharePoint users will see the change.



For new installations, some default settings can be deployed by pushing out an edited copy of the default *UserPreferences.xml* after installation. Default Preferences, Profiles, tool sets, hatch patterns, and line styles for Bluebeam Revu are automatically installed into `C:\Program Files\Common Files\Bluebeam Software\Bluebeam Revu\Revu1`. Modifying the contents of this folder post-install gives you an alternate method for deploying resources like Profiles and Tool Sets.

Modify the contents of this folder post-install to:

- Deploy custom default preferences that cannot be included in *RevuPreferences.xml*.
 - Specify a particular Profile as the default active Profile.
 - This bypasses the Welcome & Studio dialogs.
 - Point Revu to a shared Profile directory.
- Deploy custom Profiles and tool sets or delete any of the defaults to control which are available.
 - If custom tool sets are deployed to this folder post-install, a modified Profile that includes these tool sets also needs to be included.

Open *UserPreferences.xml* found under Common Files in a text editor. The example below:

- Sets Construction as the default Active Profile.
- Sets `\\CompanyXYZ\Bluebeam\Profiles` as the Shared Profile directory.
 - Note that the Active Profile file (e.g. Construction.bpx) must exist in this location

```
<?xml version="1.0" encoding="utf-8"?>
<RevuUserPreferences Version="2">
  <Record Key="ProfileManager">
    <Active>Construction</Active>
    <Path>\\CompanyXYZ\Bluebeam\Profiles</Path>
  </Record>
```

Note: Do not to delete anything from this file, only add the desired changes. Deleting information from this file can cause Revu to not function correctly.

After Revu is installed, copy your edited version to `C:\Program Files\Common Files\Bluebeam Software\Bluebeam Revu\Revu1` and overwrite the existing version. When Revu is launched for the first time, the contents of this folder will be copied to create the user's Revu Settings in their roaming profile (`%appdata%\Bluebeam Software\Revu\15`). If you have included settings via *RevuPreferences.xml*, these will automatically be included.

When using a custom Profile, that Profile (.bpx) file must be copied to the Revu folder as well.

¹On x64 systems this folder also exists under Program Files (x86), so overwrite both

Note: This method only works for new installations, where a user has not previously run Revu. For upgrades and existing installations, "[Section 4.17 – Revu Command Line Parameters](#)" on page 52.



Revu Command Line Parameters

Section 4.17

Command line parameters allow the ability to quickly deploy settings silently to a workstation running Bluebeam software. They can also be set up as a .bat file to easily:

- Import a tool set into the current profile directory
- Import a Revu profile into the current profile directory
- Import a Hatch Pattern

As these are user-specific settings, they only apply to the user running the command line (that is, the current user) and should not be run as the Administrator. Making them part of a logon script is recommended.

The commands listed below show you how to deploy a command line parameter across your network. Revu must first be installed on a system in order for these commands to execute.

- If the file is a tool set (*.btx), Revu imports the tool set into the current profile directory.
- If the file is a profile, Revu will import into the current profile directory.

Silent Mode: add /s

This optional command turns off prompting as it is encountered when Revu processes the parameters listed below. The Revu splash screen and UI will momentarily flash, however. The splash screen can be disabled in Revu's General Preferences, but the appearance of the UI cannot be prevented.

Profile Commands:

Import and activate a specified profile. Use this command to import a new profile into the current profile location of your Revu session.

- `/bpximport:[File]`

Point the profile path to a specified directory. Use this only when designating a new profile directory. Make sure the profile you specify is located here as well.

- `/bpxdir:[Path]`

Designate a specific profile as active within the profile folder defined in your Revu session.

- `/bpxactive:[Name]` For names with spaces, add quotations such as `/bpxactive: "bb custom profile"`

Tool Set Commands

Point to a tool set in a non-default location without importing the file locally.

- `/btxadd:[File]`

Import the tool set into the current profile directory and add it.

- `/btximport:[File]`

Hatch Pattern Commands

Adds the hatch pattern set without importing the file.

- `/bhxadd:[File]`

Import the hatch pattern set into the current profile directory and add it

- `/bhximport:[File]`

Line Style Commands

Adds the line style set without importing the file.

- `/blxadd:[File]`

Import the line style set into the current profile directory and add it

- `/blximport:[File]`

Example

- Import the Power Profile.
- Set the active profile to be Power.bpx.
- Import the tool sets *toolset1.btx* and *dimensions.btx* to that profile.
 1. Enter silent mode `/s`.
 2. Import the Power Profile from `U:\netprofiles`.
 3. Activate the profile Power located in `U:\netprofiles\Revu`.
 4. Import *toolset1.btx* to the active profile of Power.
 5. Import *dimensions.btx* to the active profile of Power.

```
"C:\Program Files\Bluebeam Software\Bluebeam  
Revu\Revu\Revu.exe" /s /bpximport:"U:\netprofiles\Power.bpx"  
/bpxactive:Power/btximport:"U:\netprofiles\Revu\toolset1.btx"  
/btximport:"U:\netprofiles\Revu\dimensions.btx"
```



Appendices

Section 5



MSI Deploy Parameters

MSI Deploy will not automatically remove previous installations of Revu version 12.1 or older, or installations of 12.5/12.6 made via the stand-alone .exe or InstallShield Silent Setup deployment package. It will automatically uninstall MSI deployments of Revu version 12.5 or higher. If you are upgrading, we included a text script named *Uninstall Previous Versions.txt* that will assist you in uninstalling any previous version of Revu you might have.

Install ORCA or a similar MSI editor (such as InstEd) to edit your file or refer to ["Appendix B" on page 58](#) for information on configuring the install from a command line. Refer to instructions below to customize the MSI database for your organization.

All strings below are located under the Property table. Click on the Property header to sort alphabetically. Critical parameters begin with "BB_".

Warning: Do not edit any parameters in the MSI other than those listed below.

Mandatory Strings

BB_SERIALNUMBER: Enter your 7-digit serial number here.

BB_PRODUCTKEY: Enter your 12-character product key. Product key must be entered in ALL CAPS.

BB_EDITION: Enter "0" for Standard, "1" for CAD, "2" for eXtreme.

Binary Flags

BB_DEFAULTVIEWER: "0" to not change the default PDF viewer, "1" to set Revu as default.

BB_DESKSHORTCUT: "0" to disable, "1" to install Revu desktop shortcut.

BB_DESKSTAPLER: "0" to disable, "1" to install Stapler desktop shortcut.

BB_REDICON: "0" to keep default blue PDF file icon, "1" to use the red icon.

BB_IE_PLUGIN: "0" to disable, "1" to install Bluebeam Internet Explorer PDF Viewer plugin.

BB_QUICKLAUNCH: "0" to leave disabled, "1" to enable Revu Quick Launch

Optional Strings

(Unless otherwise noted, leave as "0" to ignore)

BB_FEATURES: leave as "65535" to ignore. Used for disabling features. See ["Appendix D" on page 71](#)

BB_JOBOPTIONS: specify fully-qualified path or UNC to the folder containing your modified JobOptions files.

Job Options: This option will replace default versions of JobOptions files (found in C:\ProgramData\Bluebeam Software\Bluebeam Revu\Brewery\V45\Settings) during installation. The Bluebeam Plugin Settings and Advanced Settings in the Save As dialog are controlled by the JobOptions files.

- Note that files must not be read-only.
- Files must be contained within valid sub-folders (such as Printer Driver or AutoCAD.Plugin.)
- It is not necessary to include a complete set of files.
- Can be edited with a text editor to increase resolution (for example, %DownSampleResolution 600)

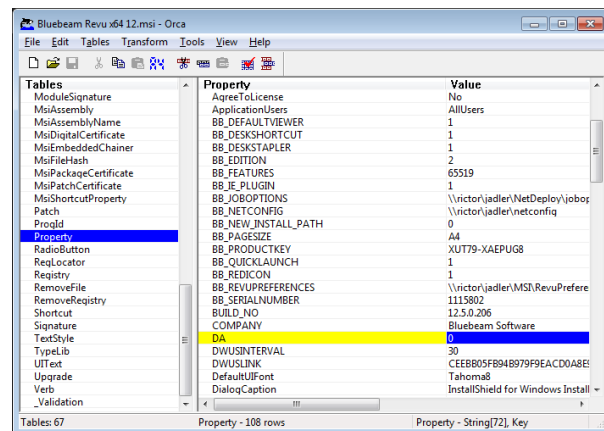
BB_NETCONFIG: specify fully-qualified path or UNC to your managed Net Configuration.

BB_NEW_INSTALL_PATH: specify fully-qualified path.

BB_PAGESIZE: set to "A4" to override default Bluebeam PDF printer page size.

BB_REVUPREFERENCES: setting this option will deploy a RevuPreferences.xml file (exported from the Preferences dialog). Specify fully-qualified path or UNC, including the file name.

MBCODE: 4-bit flag for custom plugin configuration. Leave as default "1023" to enable all plugins. "1" Office, "2" AutoCAD, "4" AutoCAD LT (32 bit only), "8" SolidWorks, "16" Revit/Navisworks, "32" Internet Explorer plugin, "64" ProjectWise, "128" Outlook, "256" SketchUp Pro, "1023" to install all plugins, "0" to disable all plugins. (For example, for only Office and AutoCAD, change the value to 3 (2+1).)



DA: "0" for standard authorization, "1" for delayed authorization

IGNORE_RBT: set to "1" to disable the check for pending reboots. When enabling this, systems must already have .NET Framework 4.5.0 or higher installed and the computer must have restarted once in order for its setup to complete.

Optional Post-install step

To show the edition of Revu (i.e., Standard, CAD, or eXtreme) with the product name in the Programs and Features/Add or Remove Programs (ARP) window:

- Deploy the included program *ARP_Modifier_v15xx.exe*.
- Note that ARP renaming is determined from the BB_EDITION flag, not from the serial number registration.

Appendix B



Section 5.02

It is also possible to configure an MSI deployment by passing parameters to the install from a command line instead of editing the MSI directly. See ["Appendix A" on page 55](#) for a complete list of configurable MSI parameters.

The Bluebeam MSI deployment package is run via the Msiexec utility using the following syntax:

```
msiexec /i {Package}
```

Parameters

/i

Installs or configures a product.

Package

Specifies the name of the Windows Installer package file.

Example Command Lines

In the following examples, the Bluebeam MSI packages have been copied to G:\BB. Replace anything in italics with your information; do not include the {} brackets.

Basic silent install of CAD Edition:

```
msiexec.exe /i "G:\bb\Bluebeam Revu x64 15.msi" BB_SERIALNUMBER={Your SN} BB_PRODUCTKEY={Your PK} BB_EDITION=1 /qn
```

Basic install of Revu using an MST Transforms file:

```
msiexec.exe /i "G:\bb\Bluebeam Revu x64 15.msi"  
TRANSFORMS="G:\bb\MyTransforms.mst"
```

Basic install of Revu passing the minimum number of properties necessary for a successful deployment, including delayed authorization:

```
msiexec.exe /i "G:\bb\Bluebeam Revu x64 15.msi" BB_SERIALNUMBER={Your SN} BB_PRODUCTKEY={Your PK} BB_EDITION={Your Edition} DA=1
```

Basic silent install; specifies an A4 default page size for the Bluebeam Printer:

```
msiexec.exe /i "G:\bb\Bluebeam Revu x64 15.msi" BB_SERIALNUMBER={Your SN} BB_PRODUCTKEY={Your PK} BB_EDITION={Your Edition} BB_PAGESIZE=A4 /qn
```

Basic silent install; specifies a central location "u:\bb-config" for Bluebeam settings:

```
msiexec.exe /i "G:\bb\Bluebeam Revu x64 15.msi" BB_SERIALNUMBER={Your SN} BB_PRODUCTKEY={Your PK} BB_EDITION={Your Edition} BB_NETCONFIG="u:\bb-config" /qn
```

Basic silent install; specifies not making Revu the default PDF viewer, and not placing a short-cut for Revu on the desktop:

```
msiexec.exe /i "G:\bb\Bluebeam Revu x64 15.msi" BB_SERIALNUMBER={Your SN} BB_PRODUCTKEY={Your PK} BB_EDITION={Your Edition} BB_DEFAULTVIEWER=0 BB_DESKSHORTCUT=0 /qn
```

Basic silent install; specifies a non-default installation path, and enables the Bluebeam IE Viewer plugin:

```
msiexec.exe /i "G:\bb\Bluebeam Revu x64 15.msi" BB_SERIALNUMBER={Your SN} BB_PRODUCTKEY={Your PK} BB_EDITION={Your Edition} BB_NEW_INSTALL_PATH="D:\Program Files\Bluebeam" BB_IE_PLUGIN=1" /qn
```

Basic silent install; specifies a folder with replacement .JobOptions files:

```
msiexec.exe /i "G:\bb\Bluebeam Revu x64 15.msi" BB_SERIALNUMBER={Your SN} BB_PRODUCTKEY={Your PK} BB_EDITION={Your Edition} BB_JOBOPTIONS="g:\bb\joboptions" /qn
```

Basic silent install; specifies a Revu Preferences file to be deployed:

```
msiexec.exe /i "G:\bb\Bluebeam Revu x64 15.msi" BB_SERIALNUMBER={Your SN} BB_PRODUCTKEY={Your PK} BB_EDITION={Your Edition} BB_REVUPREFERENCES="g:\bb\RevuPreferences.xml" /qn
```

Basic silent install; specifies use of the red PDF file icon:

```
msiexec.exe /i "G:\bb\Bluebeam Revu x64 15.msi" BB_SERIALNUMBER={Your SN} BB_PRODUCTKEY={Your PK} BB_EDITION={Your Edition} BB_REDICON=1 /qn
```

Basic silent install; specifies Delayed Authorization, and a Revu Preferences file to be deployed:

```
msiexec.exe /i "G:\bb\Bluebeam Revu x64 15.msi" BB_SERIALNUMBER={Your SN} BB_PRODUCTKEY={Your PK} BB_EDITION={Your Edition} BB_REVUPREFERENCES="g:\bb\RevuPreferences.xml" DA=1 /qn
```

Basic silent install of CAD Edition using UNC Paths:

```
msiexec.exe /i "\\BluebeamServer\Software\bb\Bluebeam Revu x64 15.msi" BB_SERIALNUMBER={Your SN} BB_PRODUCTKEY={Your PK} BB_EDITION=1 /qn
```

Basic silent install of eXtreme Edition with UNC paths and specifying a central location for Bluebeam settings:

```
msiexec.exe /i "\\BluebeamServer\Software\bb\Bluebeam Revu x64 15.msi" BB_SERIALNUMBER={Your SN} BB_PRODUCTKEY={Your PK} BB_EDITION=2 BB_NETCONFIG="\\Bluebeam Server\Software\bb-config" /qn
```

Basic silent install of Standard Edition with only the Microsoft Office and AutoCAD plugins enabled (using the MBCODE parameter 3 (1 for Office + 2 for AutoCAD):

```
msiexec.exe /i "G:\bb\Bluebeam Revu x64 15.msi" BB_SERIALNUMBER={Your  
SN} BB_PRODUCTKEY={Your PK} BB_EDITION=1 MBCODE=3 /qn
```

See [http://technet.microsoft.com/en-us/library/cc759262\(v=ws.10\).aspx](http://technet.microsoft.com/en-us/library/cc759262(v=ws.10).aspx) for more information on Msiexec command-line options.



Bringing it Together: A Fully Configured Deployment

This example provides a step by step overview of implementing customized Bluebeam settings during deployment. Please note that Revu settings and managed configurations should be setup on a master configuration machine prior to the actual deployment of the software.

Problem: Deploying a Bluebeam Update

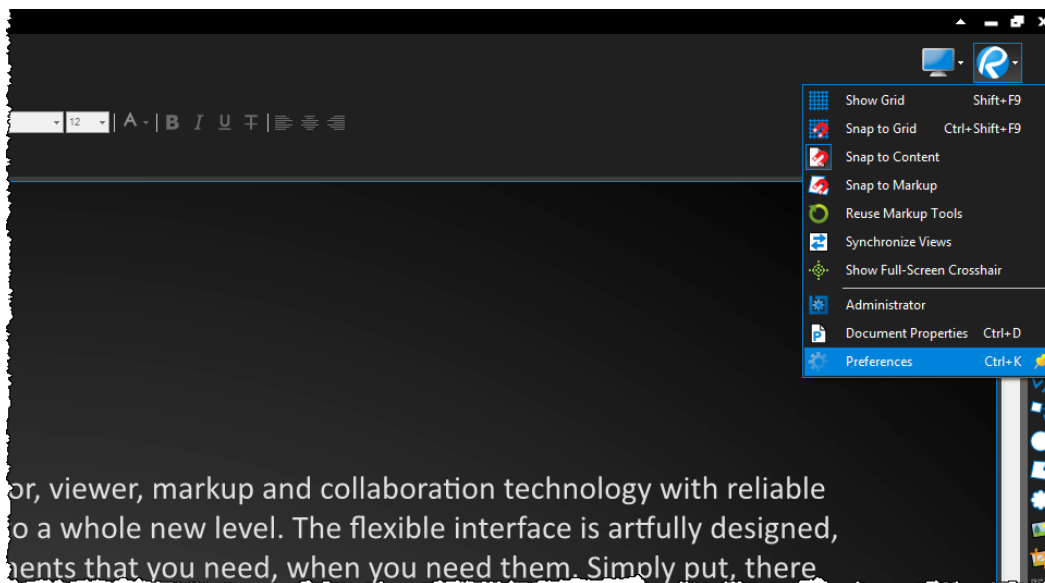
You are instructed to deploy a Bluebeam minor update within your company.

- Since this is an update, your organization already has customized stamps and custom page sizes placed in a network folder. You will need to make sure these files are still accessible once the update is complete.
- Because of a new project that will start soon, you have to create a new profile that will enhance workflow for everyone on the project. Since everyone will be accessing this profile, you do not want them to edit it freely.
- Custom toolsets have already been created for the project and the project manager has e-mailed them to you to add to all systems. The CAD manager needs the ability to update the tool sets, however typical users should not be able to modify them.

Solution:

1. Setup a Master Configuration Workstation

Install Bluebeam Revu on a single workstation. Once installed, launching Revu should bring you to the Start Page. Start by setting new preferences from the Settings menu in the upper-right corner of the interface.

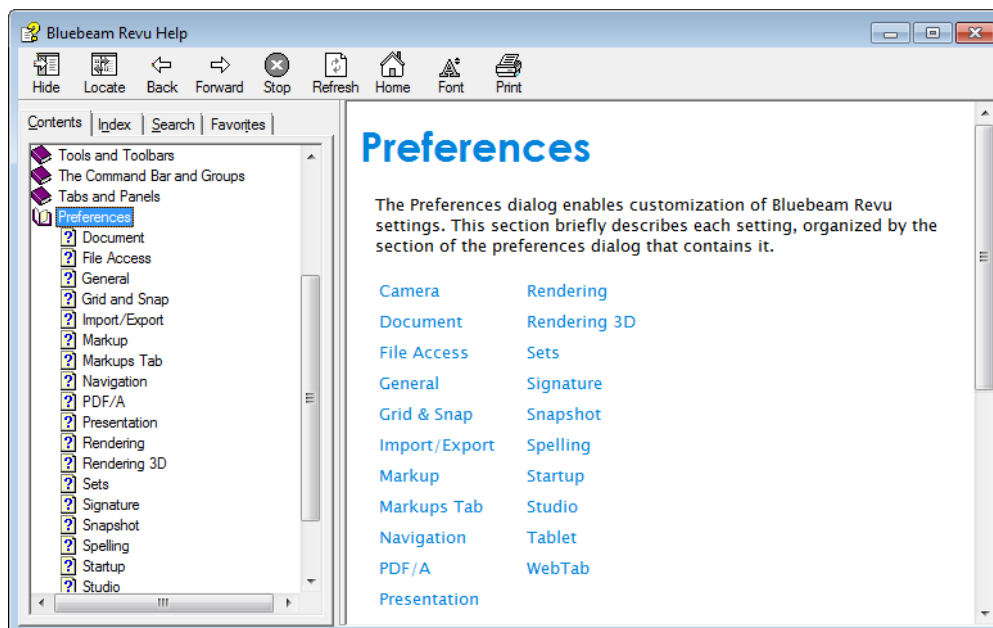


2. Configure your preferences

If no preferences need to be edited, this step may be skipped.

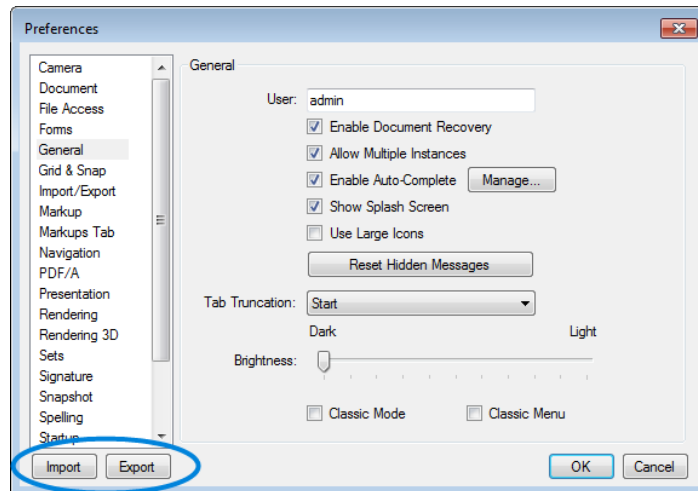
Preferences Menu

Detailed descriptions of each category in the Preferences window can be found in the *Bluebeam Revu Help Guide*. You can access this help guide through the Help menu of Revu.

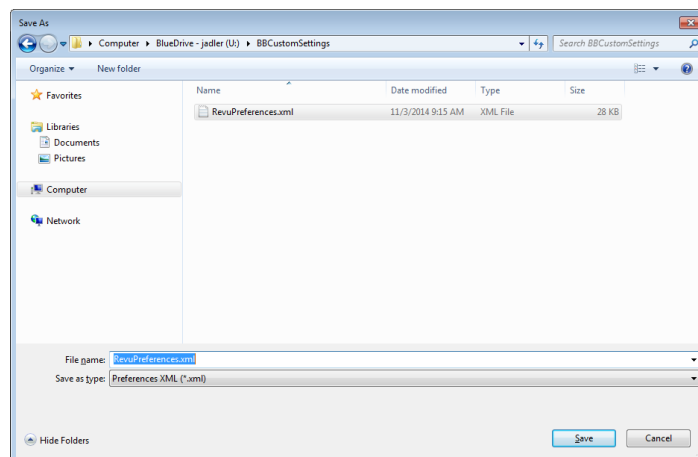


a. Export your newly configured preferences

Import/Export buttons are located in the Preferences list.



When exporting preferences, the default file name given is *RevuPreferences.xml*.

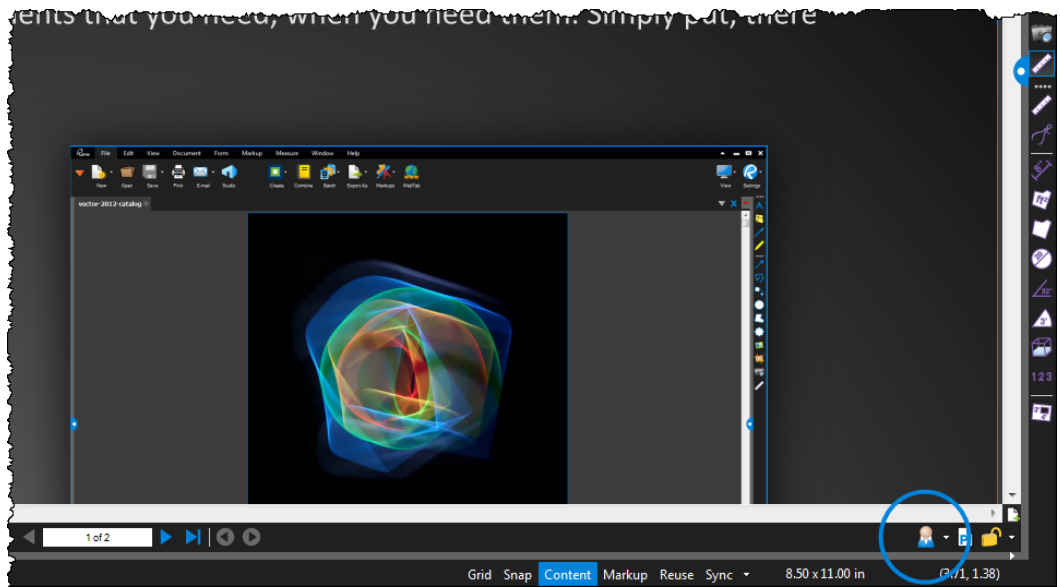


Save this file to your centralized location in preparation for deployment.

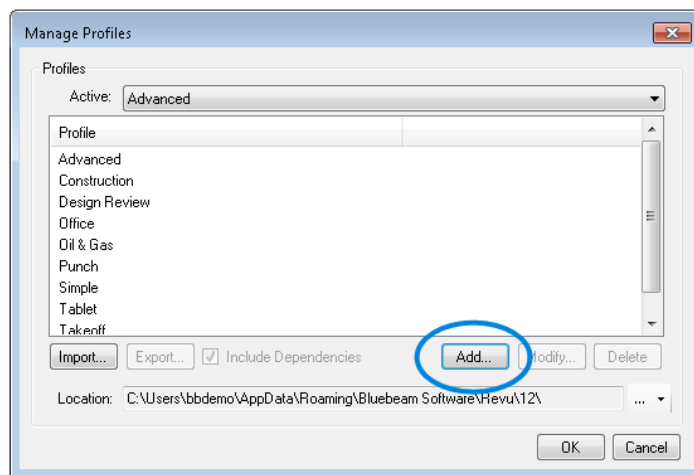
3. Configure your profile

a. Add a New Profile

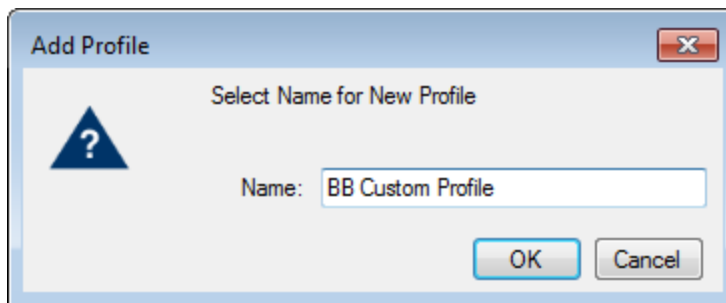
Add your new profile by clicking on the **Manage Profiles** button located at the lower-right corner of the Revu Interface.



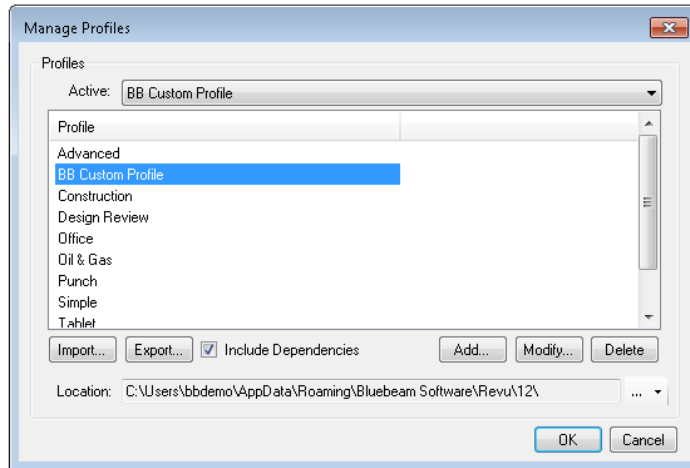
Click **Add**.



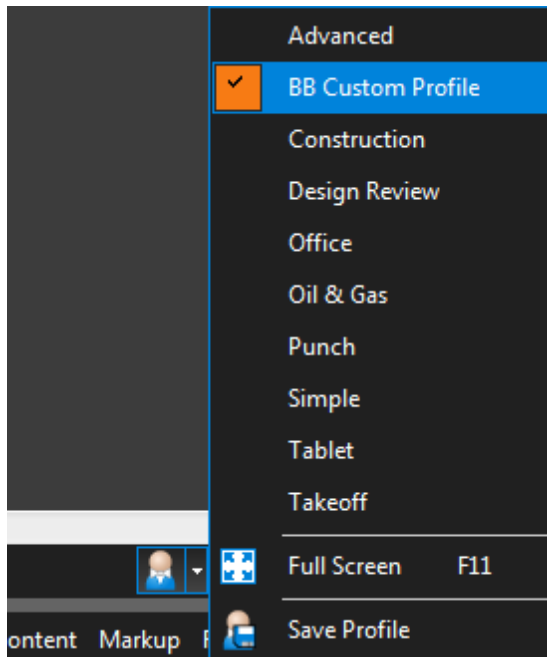
Enter the name of the new profile and click **OK**.



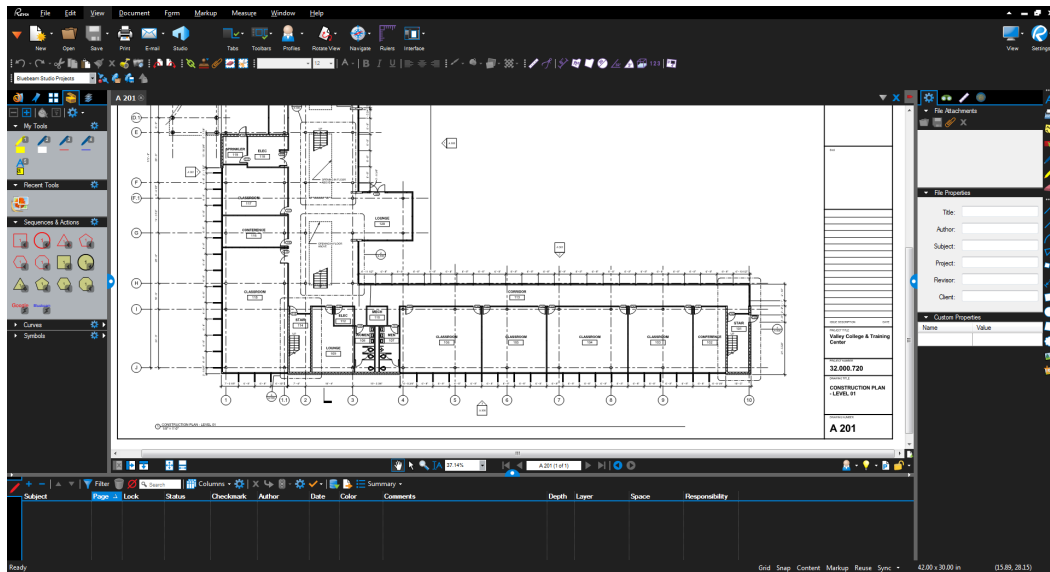
The new profile will show up in the Manage Profiles dialog box. Click **OK**.



Select the profile you just created from the **Profiles** menu to activate it.

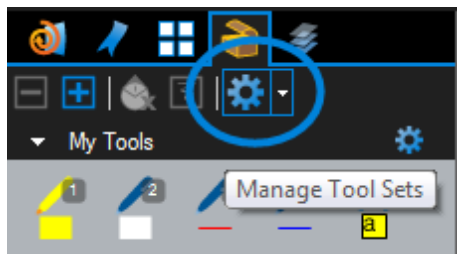


Configure the toolbars and panels as you wish by dragging them into your preferred position. Click the **View** menu to enable any tabs and toolbars you would like to activate.

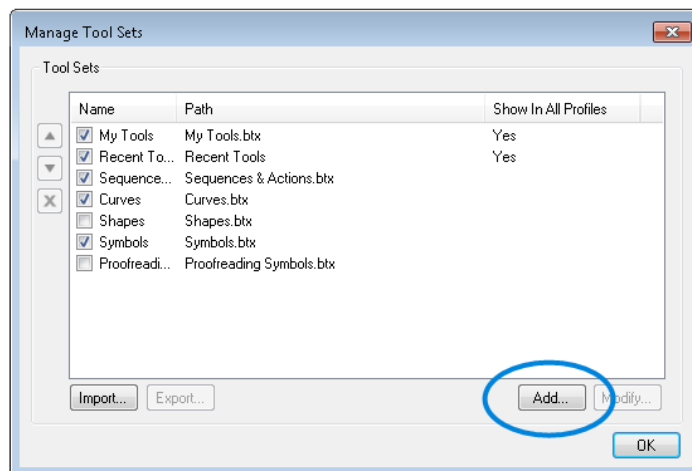


b. Add Tool Sets

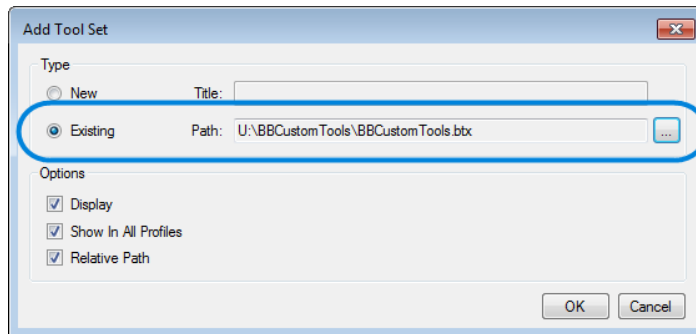
Select the **Manage Tool Sets** icon on the Tool Chest tab.



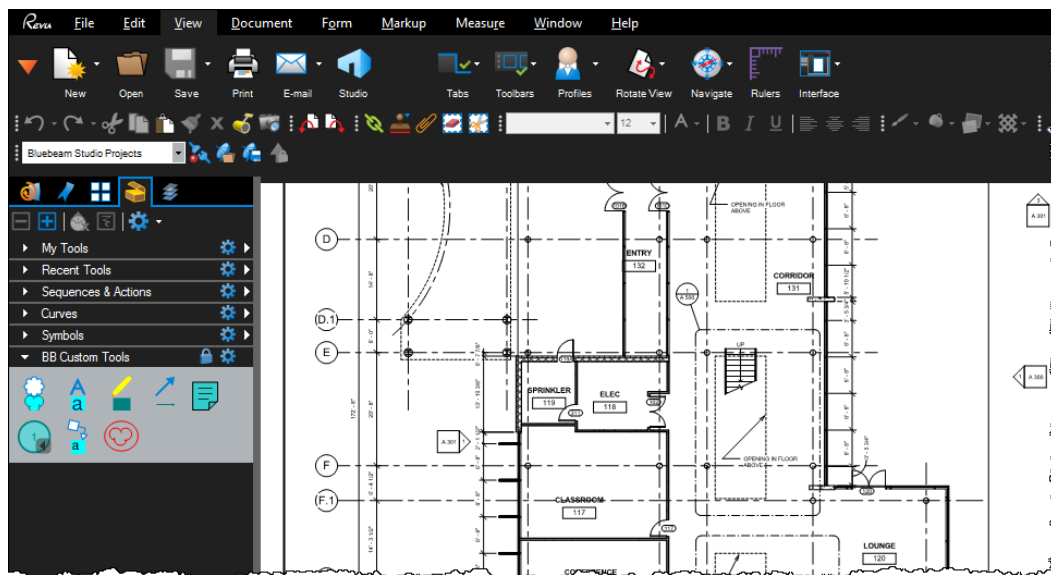
Click **Add**.



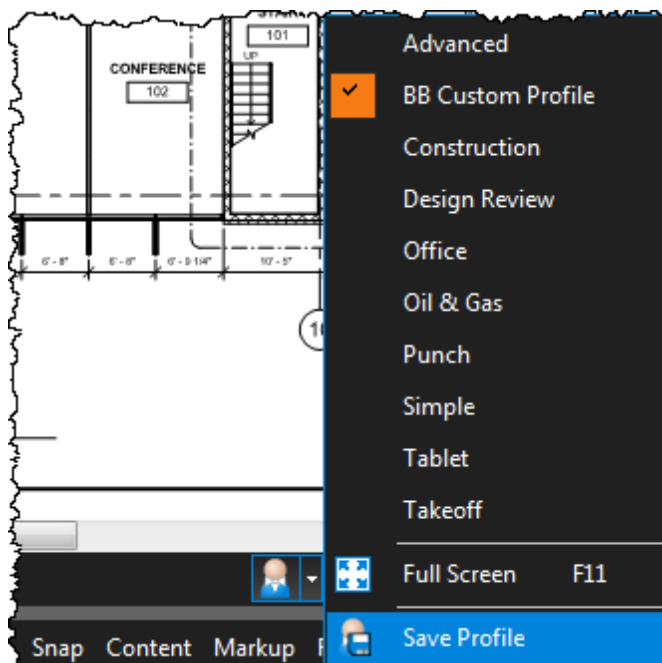
Select **Existing** since we are adding an existing tool set that was sent via e-mail. Click the browse (...) button and select the tool set you would like to add. Click **OK** when finished.



The new tool set(s) will now show up within your profile.

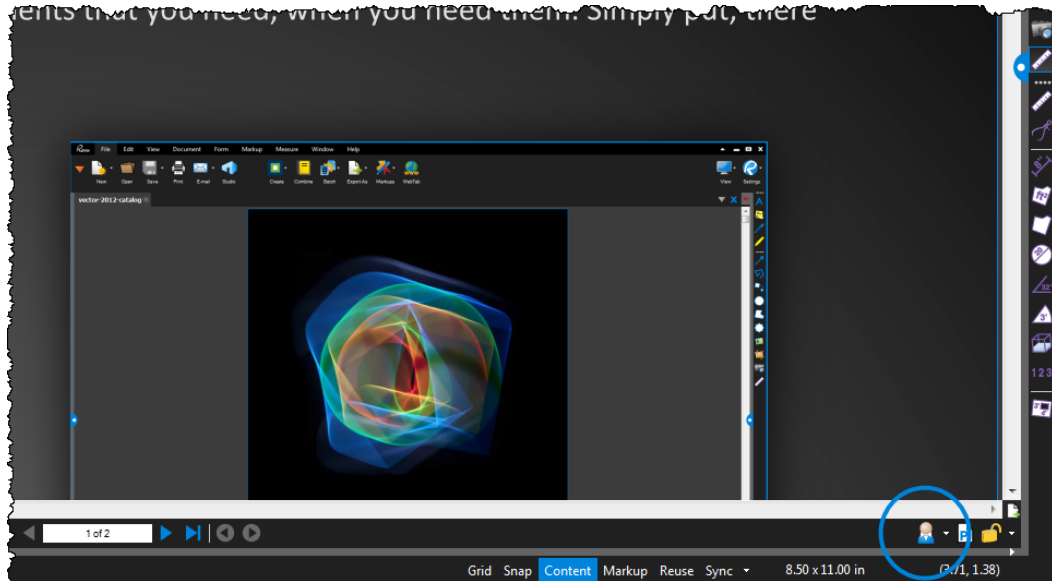


Save Profile before exporting or else your changes will not get exported.

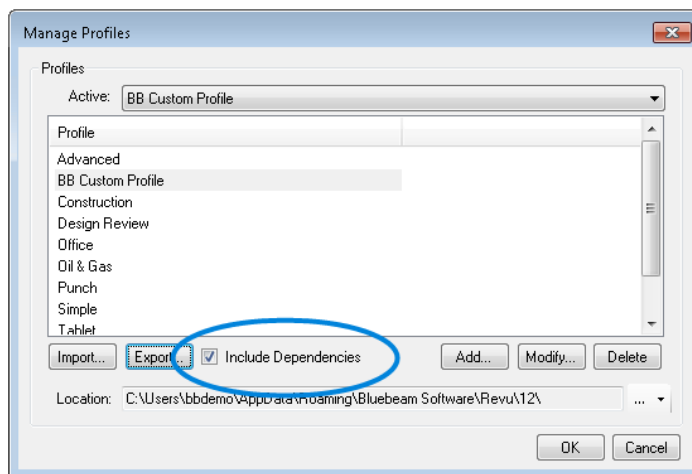


c. Export Your Profile

Save the profile to a centralized location. Be sure to save the Profile (**Profiles > Save Profile**) before exporting to include any changes, then click the Manage Profiles button in the lower-right corner of the interface.

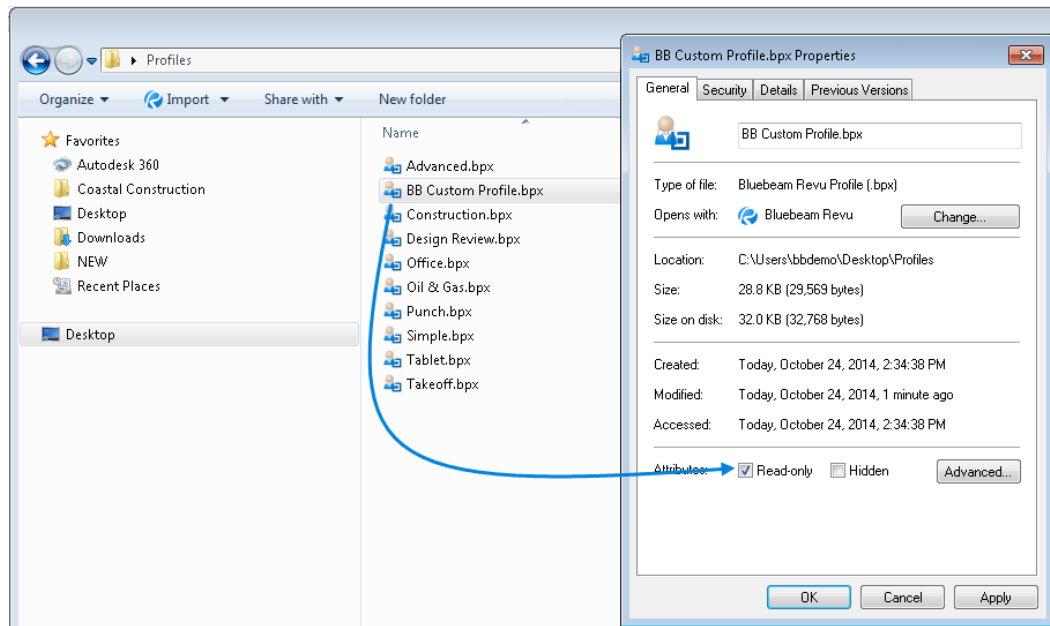


Enable **Include Dependencies** if you want to include custom tool sets, hatch pattern sets or line style sets with your profile when it is exported, then click **Export** and save the file.



d. Set Profile to Read Only

Set the profile to read-only so it cannot be modified by users, or configure special permissions to allow designated users the ability to manually save changes when updates for everyone are desired.



4. Deploy Bluebeam Revu

Now that your custom preferences and profile have been configured and saved to the network, configure the deployment with the following settings:

- a. Exported preferences file *RevuPreferences.xml* is located at:
`U:\BBcustomsettings\RevuPreferences.xml`
- b. Custom stamps and currently managed Net Config items are located at:
`U:\BBcustomsettings`

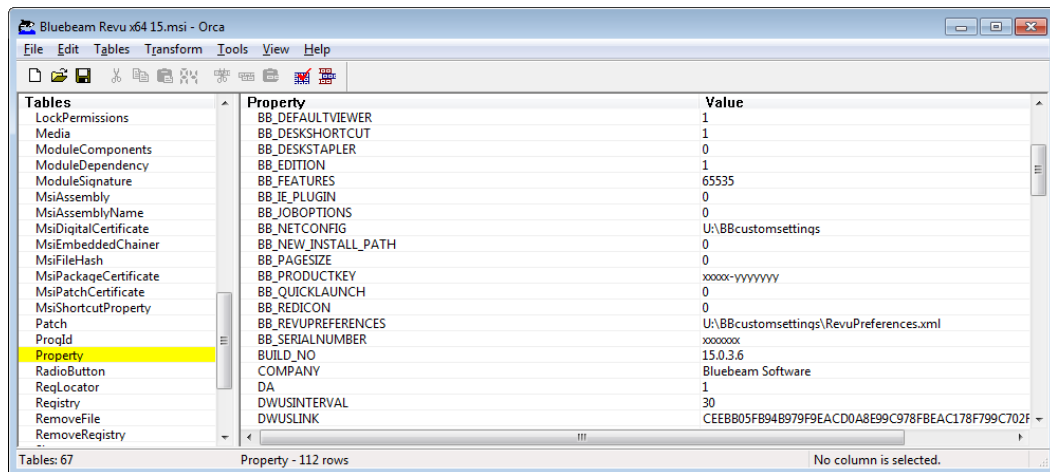
For best deployment results, follow the Best Practices listed in "[Section 1.03 – Deployment Recommendations](#)" on page 9.

MSI Deploy

MSI Deploy will not automatically remove previous installations of Revu version 12.1 or older, or installations of 12.5/12.6 made via the stand-alone .exe or InstallShield Silent Setup deployment package. It will automatically uninstall MSI deployments Revu version 12.5 or higher. If you are upgrading, we have included a text script named *Uninstall Previous Versions.txt* that will assist you in uninstalling any previous version of Bluebeam Revu you may have.

Configure your MSI as shown below or add these Properties to your command

line and install with elevated permissions.



5. Deploy Custom Profile

After Revu has been installed, the last step of the deployment process is to deploy the custom Profile. Refer to ["Section 4.17 – Revu Command Line Parameters"](#) on page 52 for more information.

```
"C:\Program Files\Bluebeam Software\Bluebeam Revu\Revu\Revu.exe"  
/s /bpximport:"[path]"
```

Appendix D



Section 5.04

The BB_FEATURES property in the MSI can be used to disable certain features in Revu (See ["Appendix A" on page 55](#) for more information on MSI Deploy Parameters). When the BB_FEATURES property value is left at the default of 65535, no features are disabled. To disable features, subtract their value (found in the list below) from 65535 and use the result as the BB_FEATURES property value. The following features can be disabled:

EditText = 1

Redaction in eXtreme (Includes Cut Content & Erase Content in all editions) = 2

DigitalSignatures = 4

SelfSignCertificates = 8

Product Updates Button on the Help menu Tab = 16

TranslateMarkups = 32

ExportToOffice = 64

Administrator Button on the Help Menu Tab = 128

Registration Button on the Help Menu Tab = 256

AllFeatures = 255

For example, if you wanted to disable the Bluebeam Administrator button (128) and the Redaction feature (2), you would find the desired BB_FEATURE property value thusly:

$$65535 - (128+2) = 65405$$

Appendix E



Section 5.05

Troubleshooting

Consult the table below for common solutions to issues encountered during and after installation.

Problem	Solution	Reference
<i>Revu fails to install</i>	Ensure the necessary prerequisites are in place: <ul style="list-style-type: none"> • .NET Framework 4.5.0 or higher • Service Pack 1 for Windows 7 • Previous installations of Revu have been removed 	"Section 1.02 – Prerequisites" on page 7 "Section 1.05 – Upgrading Bluebeam" on page 11
	Ensure Revu is being installed with elevated permissions.	"Section 1.06 – MSI Deploy Installation" on page 12
	Before testing your deployment system, ensure Revu installs properly from an elevated command prompt. <ul style="list-style-type: none"> • Right-click cmd.exe and choose Run as Administrator. Initiate the installation with the command: <code>msiexec /i "Name of MSI.msi" /passive.</code> 	
	Check the MSI properties and/or command line for syntax, spelling and spacing errors. Remember that paths in the command line containing spaces must be enclosed in quotes (" "). Check the Application Log in the Windows Event Viewer for errors.	"Appendix A" on page 55 "Appendix B" on page 58

<i>Revu fails to register during installation</i>	Check the MSI properties and/or command line to make sure your Serial Number, Product Key and Edition are entered correctly and are for the version/edition you are installing.	"Appendix A" on page 55 "Appendix B" on page 58
	Ensure the installation is being run with elevated permissions.	"Section 1.06 – MSI Deploy Installation" on page 12
	Ensure the account running the install has Internet access.	
	Enable Delayed Authorization.	"Section 1.04 – Authorization" on page 10
<i>Configured properties are not applied</i>	Check the MSI properties and/or command line for syntax, spelling, and spacing errors. Remember that paths in the command line containing spaces must be enclosed in quotes (" "). All Bluebeam Properties passed through the command line must be entered in all caps (for example, BB_EDITION)	"Appendix A" on page 55 "Appendix B" on page 58
	Where applicable, verify that the correct folder paths are used and that the appropriate files are contained therein (e.g. RevuPreferences.xml).	
	Where applicable, verify that the network resources are mapped and/or available to the installer.	
<i>Bluebeam PDF Printer does not work immediately after installation</i>	Restart the computer once. Some systems install using the local SYSTEM account, and the required BbPrint.exe process may be running under this account and needs to be running under the current user.	"Section 1.03 – Deployment Recommendations" on page 9



Command Line Options

PbMngr5.exe is the Bluebeam Administrator application found in `C:\Program Files\Bluebeam Software\Bluebeam Revu\Pushbutton PDF`. It must be run from this folder.

These command line options allow you to automate changes to settings in the Bluebeam Administrator, including product registration, silently via the command line.

Administrator privileges are required to change most of these settings.

<code>/help or /?</code>	Shows command line help for <code>PbMngr5.exe</code> .
<code>/about</code>	Displays about screen for Bluebeam Revu.
<code>/printername</code>	Displays the printer name used by Bluebeam Revu.
<code>/printerdpi <number></code>	Sets the default DPI of the Bluebeam PDF printer.
<code>/reinstallptr</code>	Uninstalls and reinstalls the Bluebeam PDF printer
<code>/dvon</code>	Makes Bluebeam Revu the default PDF editor.
<code>/dvoff</code>	Resets the default PDF editor.
<code>/update</code>	Updates Bluebeam authorization server with current version and machine name.
<code>/register [<version> <serial number> <product key> [NoAuth]]¹</code>	<p>Register with no parameters will attempt to register a delayed authorization.</p> <p>Register with parameters will cross register between Bluebeam products.</p> <p>[NoAuth] delays authorization.</p>
<code>/expire</code>	Expires trial, forces Revu to be used as a reader.
<code>/setup [options]²</code>	Setup is used to initialize the following options:
<code> /DVON</code>	Makes Bluebeam Revu the default PDF editor (default).
<code> /DVON32</code>	Makes Bluebeam Revu 32 bit the default PDF editor (off by default).
<code> /DVOFF</code>	Resets the default PDF editor (off by default).

	Required parameter to avoid changing default viewer to Revu.
<code>/IF:<flags>³</code>	Bitwise flags to install plugins into (default is 0; 1023 enables all plugins ³): Office(1), AutoCAD(2), AutoCAD Lt(4), SolidWorks(8), Revit(16), Internet Explorer (32), ProjectWise(64), Outlook(128), Sketchup (256)
<code>/DPS:[A4 or Letter]</code>	Default page size to use with Bluebeam PDF printer (default is Letter).
<code>/NCPATH:<path></code>	Netconfig path.
<code>/JOPATH:<path></code>	Job options path.
<code>/PREFSPATH:<path></code>	Path to a Bluebeam Revu preferences setup file used to push out new RevuPreferences to users. Absolute and UNC paths are supported.
<code>/RED</code>	Use Red icon for PDF files (off by default).
<code>/BLUE</code>	Use Blue icon for PDF files (default).
<code>/QL</code>	Enable Quick Launch of Revu (default is disabled).
<code>/NODESKREVU</code>	Prevents the creation of a new desktop shortcut for Revu (off by default). Does not remove existing shortcuts.

Notes:

1. The `/register` command can be used to re-register the product with a different license (for example, when converting to an Enterprise License).
2. When using the `/setup` command, values must be specified for all of the options or the settings will revert to defaults, with the exception of the `/NCPATH`, `/JOPATH` and `/PREFSPATH` options.
3. The `/IF` parameter is additive. Sum the values of the plug-ins you want to enable. 1023 enables all plugins. Also note that Navisworks is tied to Revit.

Examples:

Register with parameters as below to change your current Bluebeam 2015 licenses (note that command must be on a single line):

```
"%ProgramFiles%\Bluebeam Software\Bluebeam Revu\Pushbutton
```

```
PDF\PbMngr5.exe" /register 15 1234567 ABCDE-5FGHIJK
```

Disable Office Plugins, leaving only the AutoCAD and Internet Explorer plugins enabled:

```
"%ProgramFiles%\Bluebeam Software\Bluebeam Revu\Pushbutton  
PDF\PbMngr5.exe" /setup /IF:34
```

Enable the Red icon for PDF files and enable Quick Launch of Revu where all plugins are enabled:

```
"%ProgramFiles%\Bluebeam Software\Bluebeam Revu\Pushbutton  
PDF\PbMngr5.exe" /setup /RED /QL /IF:1023
```

Deploying an updated set of Revu Preferences where all plugins except the Internet Explorer plugin need to remain enabled:

```
"%ProgramFiles%\Bluebeam Software\Bluebeam Revu\Pushbutton  
PDF\PbMngr5.exe" /setup /IF:479 /PREFSPATH:"G:\Bluebeam  
Software\Settings\RevuPreferences.xml"
```

When doing this it is recommended that you delete everything else from the XML so as not to change any other settings.

In order for the preferences to merge, the modified date of the RevuPreferences file you push out must be newer than date of the *UserPreferences.xml* file for the user. If it isn't, Revu will ignore the preferences so as not to overwrite newer settings with something that might be outdated. The UserPreferences get saved when Revu is closed.

When merging preferences, you need to add Merge="True" (case sensitive) into the header of this *RevuPreferences.xml* file:

```
<RevuPreferenceDictionary Version="1" Merge="True">
```

Here's an example of pushing out only the setting to turn ON the File Access Preference "Toolbar Integration Only":

```
<?xml version="1.0" encoding="utf-8"?>  
<RevuPreferenceDictionary Version="1" Merge="True">  
<DocManSys>  
<Tool-  
bar-  
IntegrationOnlyx64.>True</ToolbarIntegrationOnlyx64.>  
</DocManSys>  
</RevuPreferenceDictionary>
```